

ABERDEEN AG EXPO



You are invited to attend

February 20 - 22, 2018
Best Western Ramkota

February 20
12 pm - 6 pm

February 21
9 am - 6 pm

February 22
9 am - 5 pm



DAKOTA
Broadcasting

107.7
KABD-FM
70s, 80s, 90s...or whatever!

ABERDEENTM
CONVENTION & VISITORS BUREAU



QUALITY QUICK PRINT

2018 Aberdeen Ag Expo Seminar Schedule

Show times:

February 20, noon – 6pm, February 21st- 9am to 6pm and February 22nd 9am – 5pm
Stop by many of the booth for great door prizes and special offers

Seminar Schedule.

Seminars will be held in the theater just off the main show hallway
Please check AberdeenAgExpo.com for updates schedules and additional speakers

Speakers

Aberdeen Ag Committee – February 21st 11am

Speakers: : Kristina Sigaty, Grain Origination at Concord Grain; Kim Schneider, Farm & Ranch Sales Associate at Insurance Plus and Gared Shaffer, Weeds Field Specialist at SDSU Extension.

Topic Crops 2018: Profit for the Producer

This three-presenter panel will focus on different aspects of crop production with emphasis on strategies useful for increasing profits. The three segments will include: grain marketing strategies (forward contracting and alternative solutions), weeds and agronomy marketing (off-target movement, a profit killer) and crop insurance updates.



Raven Industries: - February 21st – Noon & 3pm

Speaker - Scott Krell- Precision Ag Sales

Raven Applied Technology delivers impactful technology to growers and custom applicators around the globe. Deeply committed to feeding a growing world population, Raven develops precision agriculture products that promote environmental stewardship, allowing farmers to grow more with less. Products include Field Computers, Application Controls, Wireless Connectivity, Cloud-Based Data Management.



Pifer Auction – February 21st 2pm & February 22nd 11am

Speakers – Kristen Gill, & Jody Nohrenberg

The Pifers team will cover land values & industry trends, land management options, capital gains taxes, and tax deferred exchanges.



February 22, 2 pm
Kristi Noem



SAVE \$1000s THIS WINTER!

Don't let rodents damage equipment, storage buildings and cattle yards.



Call us 844-929-3284

and schedule your

FREE INSPECTION

to protect your farm and ranch from damage caused by rodents.



Serving Aberdeen, Huron, Mitchell, Mobridge, and Sheridan areas.

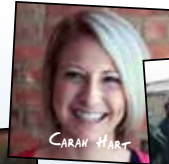
www.pfizerpestcontrol.com

RED RIVER FARM NETWORK
Reporting Agriculture's Business

DAKOTA Broadcasting
America's Top Farm Team



RANDY KOENEN



CARAN HART



DON WICK



MIKE HEGER

Great Reporting from the RRFN Includes:

- 85 minutes each weekday of in-depth news, markets, and weather specific to Northern Plains Agriculture

- Trusted broadcast journalists delivering timely information vital to the success of the area farmers and ranchers.

107.7
KABD - FM
700, 800, 900...at whatever!

Broadcast Schedule

9:50 – 9:55 am Opening Markets
1:50 – 1:55 pm Market Wrap



Broadcast Schedule

6:30 – 7:00 am Country Morning
9:30 – 9:35 am Opening Markets
10:30 – 10:35 am Market Update
11:30 – 11:35 am Market Update
12:30 – 1:00 pm Agriculture Today
1:30 – 1:40 pm Market Wrap



AGTEGRA™
COOPERATIVE

**YOUR OPERATION.
OUR PRODUCTS AND SERVICES.**

**GRAIN • AGRONOMY • PRECISION AG
AERIAL APPLICATION • PETROLEUM • FEED**

Agtegra.com / 888-429-4902 / 908 Lamont St. South, Aberdeen, SD 57401



Prescription AGRONOMICS



- Custom Blended Fertilizer
- Liquid Starter Fertilizer
- Soil and Water Sampling
- Data Management
- Chemical Sales

Prescription Agronomics

Box 366

18 S. 4th St.

Ipswich, SD 57451

605-426-6899 or 888-302-0065

www.prescriptionag.com

At our new plant
there are more
products available
and more blending
capabilities.

Facebook

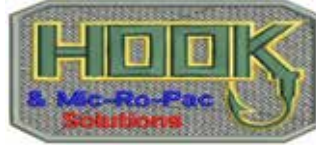


MARK MUSEL

605-216-3066

ABERDEEN, SD 57401

'N-RICH'
Plant Food Inc.



11-8-5
MIC-RO-PAC
LIQUID FERTILIZER + NUTRIENTS
"Healthy Plants Mean High Yield"

**BOOTH
45**

www.NutraDrip.com

NutraDrip
Irrigation Systems

SUBSURFACE DRIP IRRIGATION

Introducing the all-new Pro-Till lineup by Degelman.



You've heard about it, you might have seen it, now it's time to experience it for yourself. Test Drive a Pro-Till on your farm, behind your tractor and see for yourself why the Degelman Pro-Till is the choice of so many leading farmers.

Manage your crop residue, Clean your fence rows, hit the cat-tails, and prepare your field for spring.

Incredible toughness, and an impressively built robust frame are just some of the features you will find on the Pro-Till, Pro-Till sizes are 20', 26', 33' and 40 foot models.

Rock-Tuff

Be Gentle, It's a Rental.

**COME SEE US AT THE
ABERDEEN AG EXPO AT
THE RAMKOTA
WED., FEB. 21**

605.287.4133

Roscoe, SD

www.RockTuff.net



DESIGN & CONSTRUCTION LLC

BRANDON SHUEY

715 6th Ave SE
Aberdeen, SD 57401 Cell: (605) 216-7514
titandesignandconstruction.com

Gleason Crop Insurance

NCCI
405 8th Ave. NW, Ste. 303
Aberdeen, SD 57401

Edward Gleason • Gary Gleason
Office: (605) 225-9500 • 800-529-0008
Claire City: (605) 652-4535



Diversified Services

A Company of Enterprises inc

Helping to manage risk for
the American farmer, his
family, and his future.



**Be Different.
Get Noticed.**



- Custom Graphics
- Vehicles
- Outdoor Advertising
- Sandblasting
- Logo Design
- Full Color Printing
- Commercial Refinishing

Aberdeen, SD • 225-6720



Windbreaks & calf shelters available!

**Spring Booking for Wheeler
Fence Posts during the show**



205 1st Ave. SE
Aberdeen, SD 57401
605-225-7700

**FREE
DELIVERY**



**Call for a free
estimate on your
home or shop
building!**

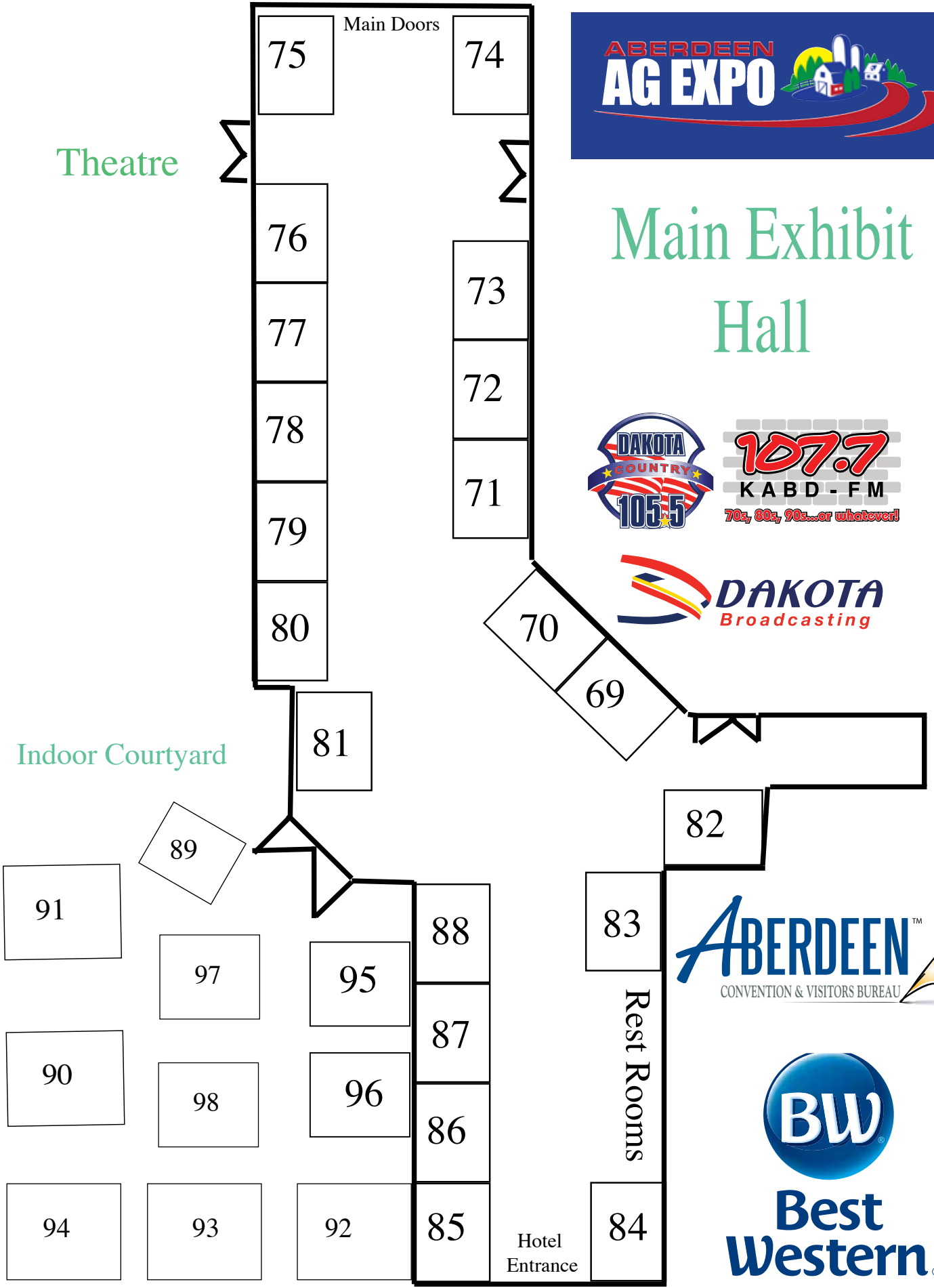
Theatre

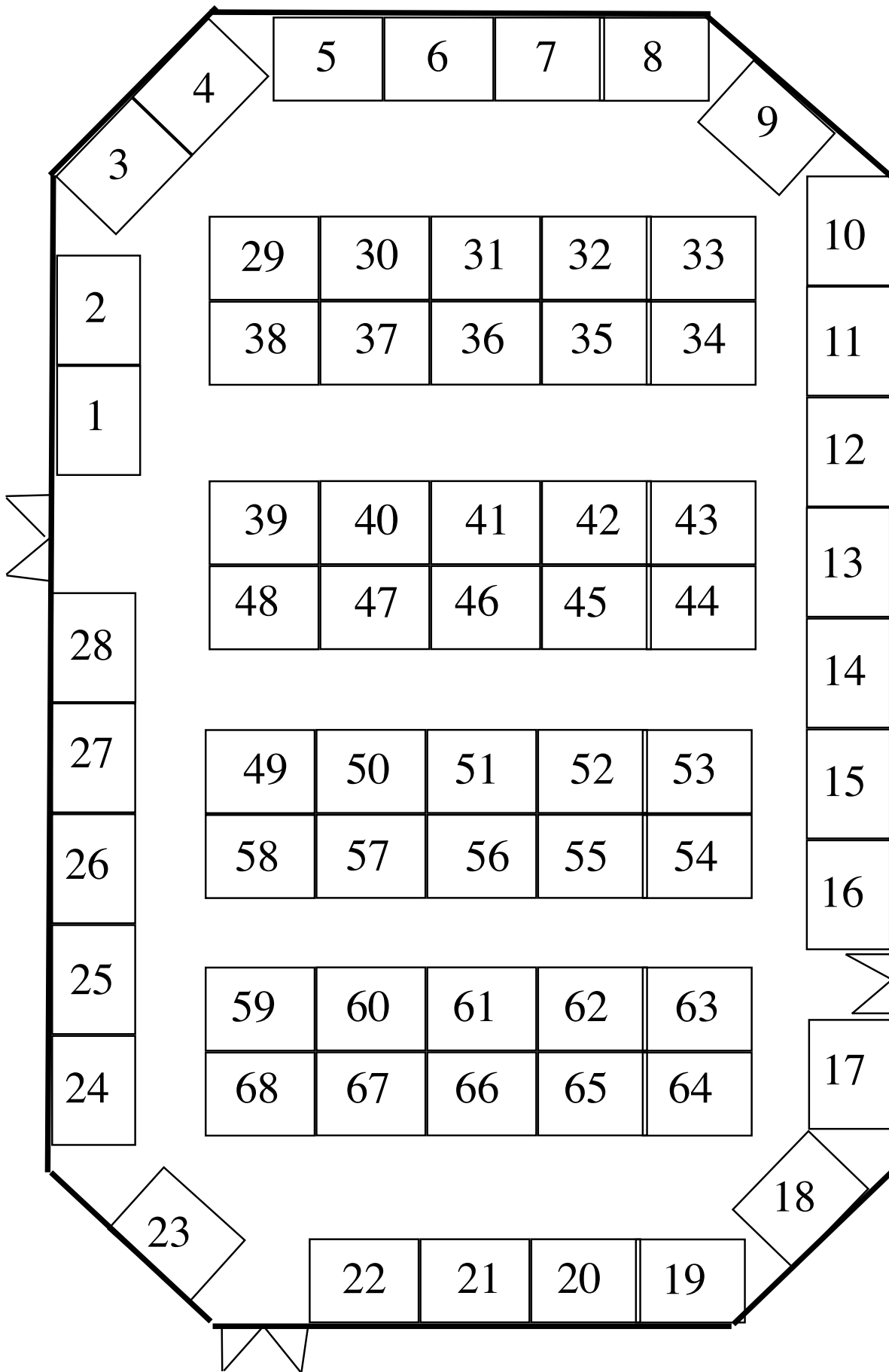


Main Exhibit Hall



Indoor Courtyard





- 1 ProAg
- 2 ProAg
- 3 ProAg
- 4 ProAg
- 5 Efraimson Electric
- 6 M&M Ag
- 7 M&M Ag
- 8 Common Sense MFG
- 9 Common Sense MFG
- 10 Common Sense MFG
- 11 House of Glass
- 12 REA Hybrids
- 13 For-most Livestock
- 14 Warrington Seed
- 15 Richland IFC
- 16 Big Iron Auction
- 17 Builders 1st Source
- 18 MLC Construction
- 19 LSI
- 20 LSI
- 21 Pinnacle Ag
- 22 Pinnacle Ag
- 23 Precision Ag
- 24 Dakota Plains(Agriswine)
- 25 Dakota Plains(Agriswine)
- 26 Mattern's Diesel
- 27 Climate Control
- 28 Concord Grain
- 29 DRN
- 30 Musel Enterprises
- 31 Hub City Equipment
- 32 Dakota Brush
- 33 Dakota Environmental
- 34 American Breeding Services
- 35 Dust Control by Climate Control
- 36 Orwig's Tubs
- 37 Superior Grain Equipment
- 38 Basin Tile and Construction
- 39 Agricover
- 40 High Plains Industries
- 41 Agtegra
- 42 Agtegra
- 43 Midwestern Bio Ag
- 44 Midwestern Bio Ag
- 45 Nutradrip Irrigation Systems
- 46 EEE, Inc
- 47 AgriKing
- 48 Fairbank Equipment
- 49 Black Knight Pools, Spas, Games and Things
- 50 Carry All Tool and Torch
- 51 J. Gross Equipment
- 52 S&S Auction
- 53 Ag Plus Farm and Ranch
- 54 Ag Plus Farm and Ranch
- 55 Shantel Krebs
- 56 Applied Water Technologies
- 57 Prairie Post Frame
- 58 N. American Drainage
- 59 Prinsco
- 60 Wolf Construction
- 61 Perrion Custom Services
- 62 Intellifarms
- 63 Intellifarms
- 64 Marty Jackley for Gov
- 65 Procellular
- 66 Infinity Ag
- 67 Infinity Ag
- 68 Avera Health Plans
- 69 N. Central Steel
- 70 N. Central Steel
- 71 Grain Solutions
- 72 Grain Solutions
- 73 Gateway Buildings
- 74 Kristi Noem for Gov
- 75 Titan Design and Construction
- 76 Insurance Plus
- 77 Steffes Group
- 78 Starion Financial
- 79 Crawford Trucks
- 80 Pritchett Twine and Netwrap
- 81 Pritchett Twine and Netwrap
- 82 Pfitzer Pest Control
- 83 Pifer's Auction
- 84 GCR Firestone
- 85 GCR Firestone
- 86 No Till Drills
- 87 Engelbrecht Ag
- 88 Proline
- 89 Haywire
- 90 TBD
- 91 TBD
- 92 TBD
- 93 TBD
- 94 QQP
- 95 Cleary Building
- 96 Farm Bureau Financial Services
- 97 TBD
- 98 TBD

Bale Feeders • Calf Shelters • Wire Winders • Feed Bunks • Solar Water Pumping Systems • Etc.



Common Sense Manufacturing

Quality that just makes sense!

35791 160th St. • Faulkton, SD 57438

Kelly Melius, Owner

605.598.4157 (office) • 605.216.0687 (cell) commonsense@venturecomm.net
605.598.4158 (fax) www.commonsemfg.com



INMAN IRRIGATION

605-225-8122



LIVESTOCK SPECIALISTS INC.

2 N Dakota St
Aberdeen, SD 57401
225-2599

LET US GIVE YOUR DREAMS THE SUPPORT THEY DESERVE.



RYAN LIKNESS AGENCY, INC.

717 Main St. | Britton, SD 57430

Office: 605.448.2357 | Mobile: 605.228.4538
rikness@amfam.com



American Family Mutual Insurance Company, S.I. and its Operating Companies
6000 American Parkway, Madison WI 53783
Visit amfam.com for details. 006441 Rev. 1/17 ©2017

702 Main St. | Webster, SD 57274

Office: 605.345.4860

420 2nd Ave E. | Sisseton, SD 57262

Office: 605.698.3411



We sell seed, fertilizer and chemicals.

Leola

chris.erdmann@seedsolutionsllc.com
(605.380.8862)

tyson.descamps@seedsolutionsllc.com
(605.228.0225)

Roscoe

joel.heilman@seedsolutionsllc.com
(605.281.1000)

gary.ulmer@seedsolutionsllc.com
(605.228.1756)



SPECIALTY TRAILER SALES & SERVICE

FULL LINE OF PARTS AND SERVICE

605-225-7750 • www.trailertime.com

Bath, SD (6 miles East of Aberdeen)

20 Sales • Service • Parts
Full Service Truck Dealer
Motorcoach Repairs All Makes

605.225.6200
800.397.6200
 3601 6th Ave. SE
 Aberdeen, SD

CRAWFORD
TRUCKS & EQUIPMENT
www.crawfordtrucks.com

**Strong brand.
 Strong coverage.**

Linda Shoup, Agent
 311 S Roosevelt St, Ste 2
 Aberdeen, SD 57401
 Bus: 605-262-1230
linda.shoup.t8je@statefarm.com

I can help protect
 your ranch and auto.
Get to a better State®.
Get State Farm.
CALL ME TODAY.



State Farm Mutual Automobile Insurance Company, State Farm Indemnity Company, Bloomington, IL
 State Farm Fire and Casualty Company, State Farm General Insurance Company, Bloomington, IL
 State Farm Florida Insurance Company, Winter Haven, FL
 State Farm Lloyds, Dallas, TX

1201785

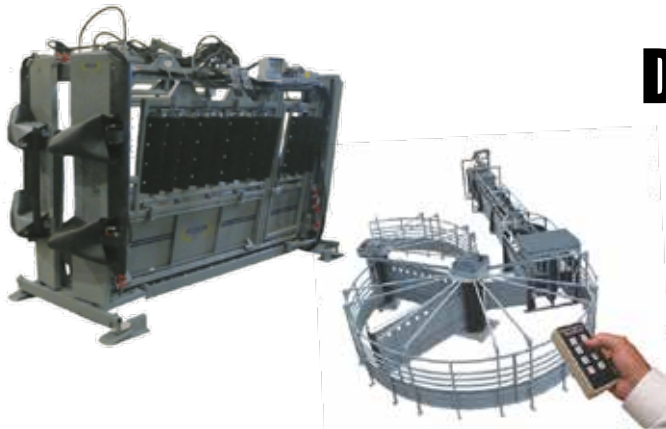
BLACK KNIGHT

Pools • Spas • Games & Things

605-226-9074
 826 6th Ave. SE
 Aberdeen, SD 57401

blackknightpools@yahoo.com Fax 605-226-9075

Look to us for all your livestock equipment needs.



DOUBLE J
 Mfg. & Repair



Common Sense
 Manufacturing Inc.



FM
For-Most
 Livestock Equipment

M&M AG
SALES & SERVICE

Wayne Mittleider
 Tappen, North Dakota

701-327-8157



Pifer's AUCTION & REALTY and Land Management



Judy Nohrenberg
Land Manager
701.269.1503
judy@pifers.com

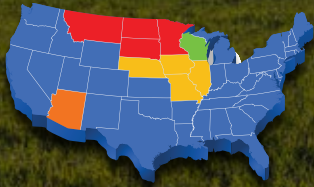


Kristen Gill
Broker Associate
701.934.2732
kgill@pifers.com

Pifer's has sold over 585,000 acres of land since 2000 and currently manages over 113,000 acres of farm land.

Do You Own Farm Land?

Check out the Ag Expo's schedule for our FREE Land Seminars!



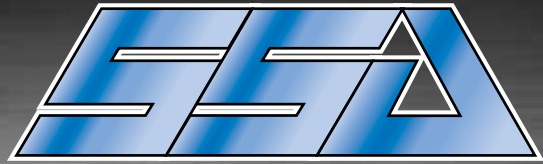
Stop by our booth to visit about current land values and cash rental rates!

Land Auctions • Land Real Estate • Land Management

Pifer's
AUCTION & REALTY



701.934.2732
www.pifers.com



STEEL STRUCTURES OF ABERDEEN

Specializing in Pre-Engineered Steel Buildings

Agriculture, Manufacturing, and Commercial

Serving the local area for over 50 years!



Call 605-225-9345



SHANTEL KREBS

CONGRESS

Get it Done!

ShantelKrebs.com

Paid for by Shantel Krebs for Congress



YOU HAVE A LOT TO DO. LET US HELP MAKE IT EASIER.

When you are busy, the safety and security of your family, business or farm is even more important. ReadITech offers customized security systems that deliver consistent quality performance even in the harshest environments.

Monitor what you value most...
even when you're not there.



READITECH

Powered by **DRN** Experts



877-559-4692 • www.drnreaditech.com

Visit our booth at the Ag Expo!

Come see us!

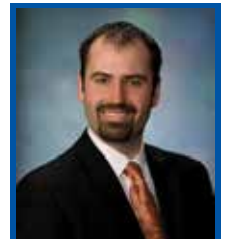
Farm and Crop Insurance Agents



John Kannegieter



Kim Schneider



Eric Payne



Because... Things Happen™

225-4270



INTELLIFARMS®

Northern Division

- Technology-based solutions and online interfaces to better manage your grain from seed to sale

- Optimize grain drying, rehydration, airflow and grain storage

PRODUCTS & PARTNERSHIP TO GROW YOUR MARGINS

605.448.5055 | 11203 SD Hwy 27 | Britton, SD

**Extended Wear Parts
3 Year/30,000 Acre Warranty**

NTD

Services and Repair

Clearbook, MN

Extended Wear Parts
3 Year/30,000 Acre Warranty

Jim Dukek

Primary Phone: 701-317-0465

Karen: 218-308-5593

Email: jimnto@gmail.com

Visit us at: notilldrill.com



DAKOTA ENVIRONMENTAL INC.
Environmental Engineers Tank Inspections
Remedial Specialists Tank Cleaning

DENNIS DUVALL

SR. ENVIRONMENTAL PROJECT MANAGER

1122 21 St. SW
P.O. BOX 636
Huron, SD 57350
dennis@dakotaenv.com

(605) 352-5610
Fax: (605) 352-0951
1-800-888-0423
Cell: (605) 350-2311

KING

INSURANCE AGENCY



**Beverly King
Owner/Agent**

234 Eighth Ave. S.
P.O. Box 469
Faulkton, SD 57438

MOBILE 605.380.8444
OFFICE 605.598.4374
FAX 605.598.6705

beverly@kinginsurancesd.com



Aberdeen (605) 225-6772
Webster (605) 345-3391
Redfield (605) 472-2540



BRIDGESTONE Firestone

622 6th Ave SE • Aberdeen, SD 57401
(605) 229-0250

An advertisement for The North Face featuring a man in a black hooded jacket climbing a rock face. The text 'NEVER STOP EXPLORING' is written in white on a red background. Logos for 'RRP QUALITY QUICK PRINT' and 'THE NORTH FACE' are visible. At the bottom, the address '2217 6th Ave SE, Aberdeen, SD | (605) 226-2541 | myqqp.com' is printed.

PRSRRT STD
US POSTAGE
PAID
ABERDEEN, SD
PERMIT NO. 200

