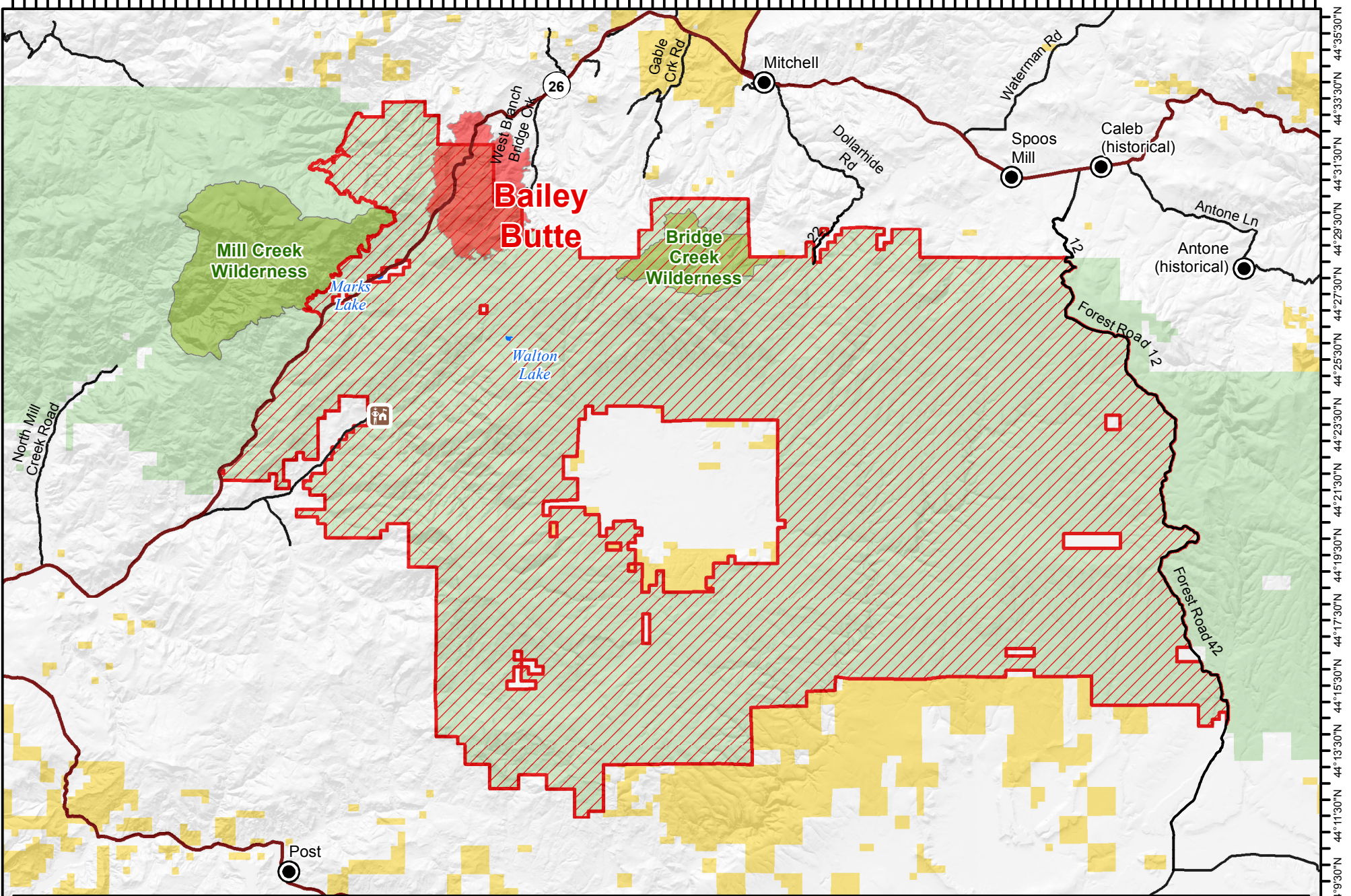



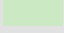



120°41'0"W 120°38'0"W 120°35'0"W 120°32'0"W 120°29'0"W 120°26'0"W 120°23'0"W 120°20'0"W 120°17'0"W 120°14'0"W 120°11'0"W 120°8'0"W 120°5'30"W 120°3'0"W 120°0'30"W 119°57'30"W 119°54'30"W 119°51'30"W 119°48'30"W 119°45'30"W



	Public Road		Bureau of Land Management
	Closed Area		US Forest Service
	Private		

Attachment "A"
Order # 06-07-01-14-001-01
 July 19, 2014

Projection: NAD 83 Albers
Datum: D North American 1983

0 1 2 4 6 8 Miles

44°50'0"N 44°48'0"N 44°46'0"N 44°44'0"N 44°42'0"N 44°40'0"N 44°38'0"N 44°36'0"N 44°34'0"N 44°32'0"N 44°30'0"N 44°28'0"N 44°26'0"N 44°24'0"N 44°22'0"N 44°20'0"N 44°18'0"N 44°16'0"N 44°14'0"N 44°12'0"N 44°10'0"N 44°08'0"N 44°06'0"N 44°04'0"N 44°02'0"N 44°00'0"N