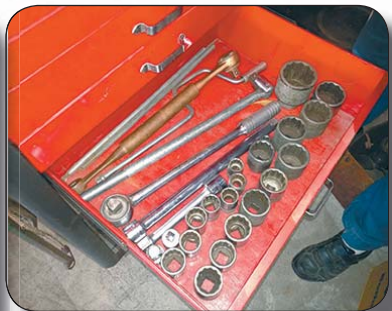


# TOOLS & BUILDING MATERIALS

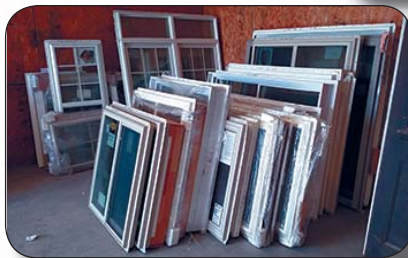
# ★ AUCTION ★

**SATURDAY • JUNE 4, 2016 @ 10:00 A.M.**

LOCATION: 1/2 MILE NORTHEAST OF O'NEILL, NEBRASKA ON HIGHWAY 108 • LUNCH ON SITE



**MAKE PLANS TO ATTEND THIS AUCTION!!**



## TRAILER LOAD OF TOOLS & SHOP ITEMS

### TOOLS

Several Socket Sets, 1/2", 3/4" Named Brand \* Wrench Sets \* Hammers \* Vise Grips \* Breaker Bars \* Several Misc. Wrenches \* 7 Drawer Rolling Tool Chest w/10 Drawer Top Cabinet \* Graco Airless Cordless Paint Sprayer \* Craftsman 10" Table Saw \* Craftsman 10" Radial Arm Saw \* Coleman 5000W Generator

### TRACTOR, CAR & JET SKI

Cub Cadet 154 60" Tractor/Mower, \* 2001 Oldsmobile Aurora, Leather \* Kawasaki Jet Ski & Single Trailer

### BUILDING MATERIALS

(50) 8"x8" Cement Tile \* (500) 4"x4" Cement Tile \* (80) 12"x12" Cement Tile \* (2) 26" 6 Panel Doors, New \* (3) 30" 6 Panel Doors, New \* 30" & 24" 6 Panel Stained Doors, New \* 32" Steel Entry Door, New \* OH Garage Door Rails \* (2) Wall Mount Sinks \* Joist Hangers, 2x8, 2x4, 2x6, 2 1/2 x 12, 2 1/2 x 14, 1 3/4 x 9 1/2, 3x6 \* Post Anchor Brackets 6x6 & 4x4 \* Belco Basement Door \* 12' Steel Studs \* Pump Scaffold

### NEW WINDOWS

**Single Hung Windows:** 84x48 1/2, 28 1/2 x 48 1/2, 45x60, 32x46, 36x54 & 24x36 \* **Double Hung Windows:** 61x60 1/2, 33 1/2 x 53, 22x57 1/2, 20x30, 28x38 \* **Slider Windows:** 72x60, 54x60, 72x60, 54x60, 72x48, 60x47, 68 1/2 x 38, 72x36, 84x36, 72x36, 60x36, 44x36, 42x42, 42x37 1/2, 36 1/2 x 36 1/2, 72x63 \* **SunRise Wood Grain:** 88 1/2 x 42, 32 1/2 x 51 1/2, 32 1/2 x 41 1/2, 50 1/2 x 33 1/2, 50 1/2 x 21 1/2 \* **Casement:** 60x48, 48x48, 60x42, 38x38, 35 1/2 x 42, 36x42, 30x48, 28x60, 30x42, 25 1/2 x 25 1/2, 18x60, 30x41 \* **Fixed:** 30x60, 48x48, 24x48, 56x30, 42 1/2 x 38 1/2, 36x18, 56x12, 75 1/2 x 22 \* **Grilled Windows:** 60x74, 41 1/2 x 54, 51 1/2 x 53, 37x42, 72x42, 24x60, 28x46, 36x24, 96 1/2 x 37, 38x41, 34x61

### HOUSEHOLD

La-Z-Boy Rocker Recliner \* Whirlpool 110V Window AC \* Old Baby Stroller \* Old Western Flyer Bike \* Old Maytag Ringer Washer \* Elgin Ball Bearing Floor Sweeper \* Tricycle

### MISCELLANEOUS

80 Gallon Propane Tank \* 5' 3pt. Blade \* (100) Steel Posts \* Reese 5th Wheel Hitch \* Elec. Valve Grinder

**NOTE:** This is only a partial listing for this contractor retirement auction. There will be at least 1 Trailer load of tools. Lots of NEW items on this sale, so get your window measurements and join us for this auction!!

AUCTION SERVICES BY:

**M&M AUCTIONS, LLC**  
**O'NEILL, NE 68763**

[www.mmauctionsllc.com](http://www.mmauctionsllc.com)

AUCTIONEERS:

Matt McKay 402-340-1209 • Mark Durre 402-340-4142

TERMS: Cash or Good Check Sale Day, Nothing Removed Until Settled For, Everything Sells As Is Where Is. NOT Responsible For Accidents, Lost or Stolen Merchandise. Advertising believed to be accurate, However, NOT Guaranteed.