



NO.	DATE	REVISION

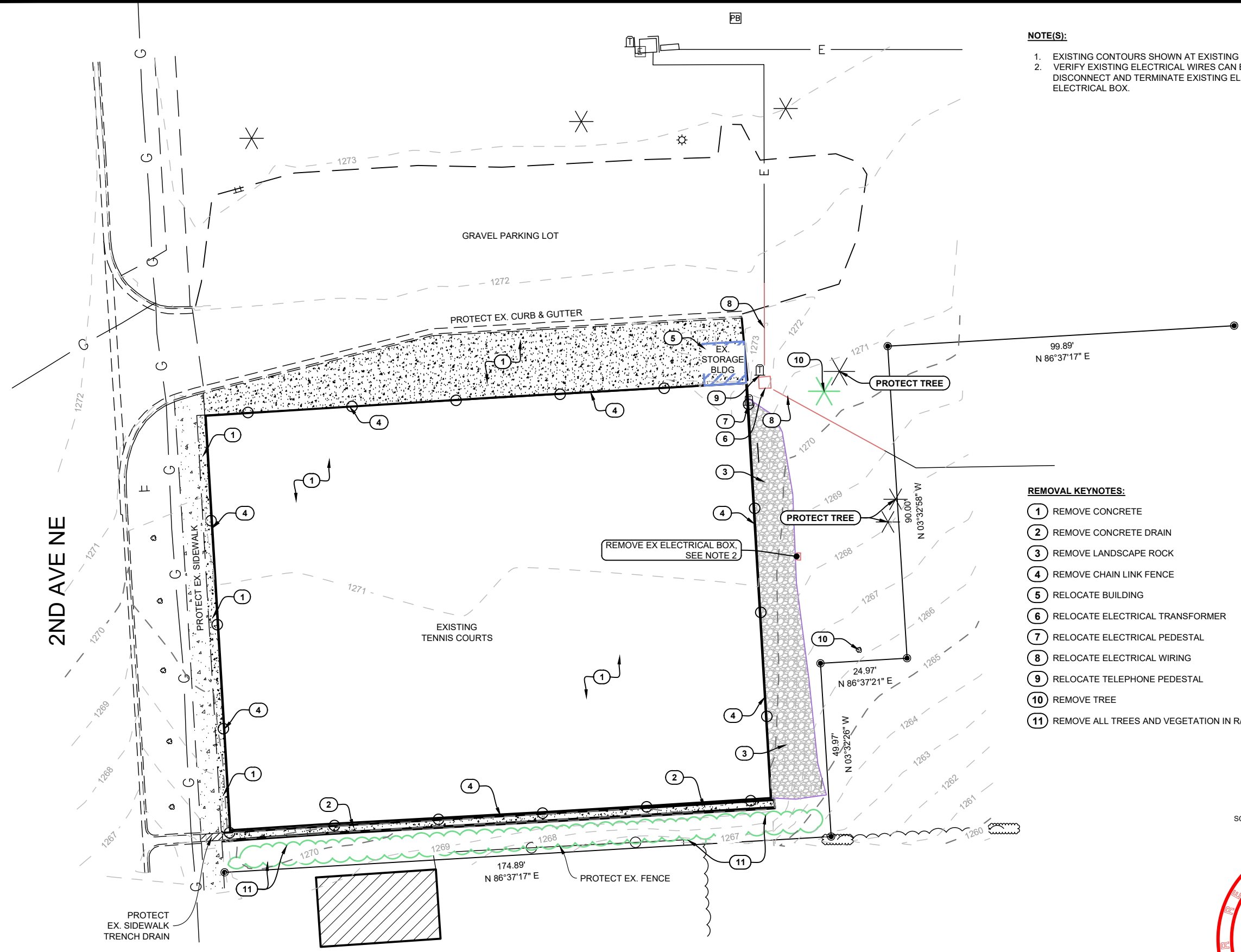
DRAFTED HAV
REVIEWED ADW
PROJECT NUMBER 2004-00170
ISSUE DATE 12/24/2020

**TENNIS COURTS RECONSTRUCTION**  
 VALLEY CITY PARKS AND RECREATION  
 VALLEY CITY, NORTH DAKOTA  
**SITE EXISTING CONDITIONS AND DEMOLITION PLAN**

SHEET  
C2.0

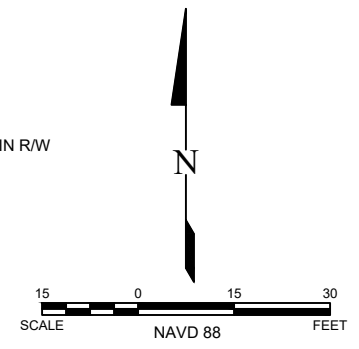
**NOTE(S):**

- EXISTING CONTOURS SHOWN AT EXISTING GRADE.
- VERIFY EXISTING ELECTRICAL WIRES CAN BE TERMINATED. AFTER VERIFICATION, DISCONNECT AND TERMINATE EXISTING ELECTRICAL WIRES PRIOR TO REMOVING ELECTRICAL BOX.



**REMOVAL KEYNOTES:**

- ① REMOVE CONCRETE
- ② REMOVE CONCRETE DRAIN
- ③ REMOVE LANDSCAPE ROCK
- ④ REMOVE CHAIN LINK FENCE
- ⑤ RELOCATE BUILDING
- ⑥ RELOCATE ELECTRICAL TRANSFORMER
- ⑦ RELOCATE ELECTRICAL PEDESTAL
- ⑧ RELOCATE ELECTRICAL WIRING
- ⑨ RELOCATE TELEPHONE PEDESTAL
- ⑩ REMOVE TREE
- ⑪ REMOVE ALL TREES AND VEGETATION IN RW





NO.	DATE	REVISION

DRAFTED	HAV
REVIEWED	ADW
PROJECT NUMBER	2004-00170
ISSUE DATE	12/24/2020

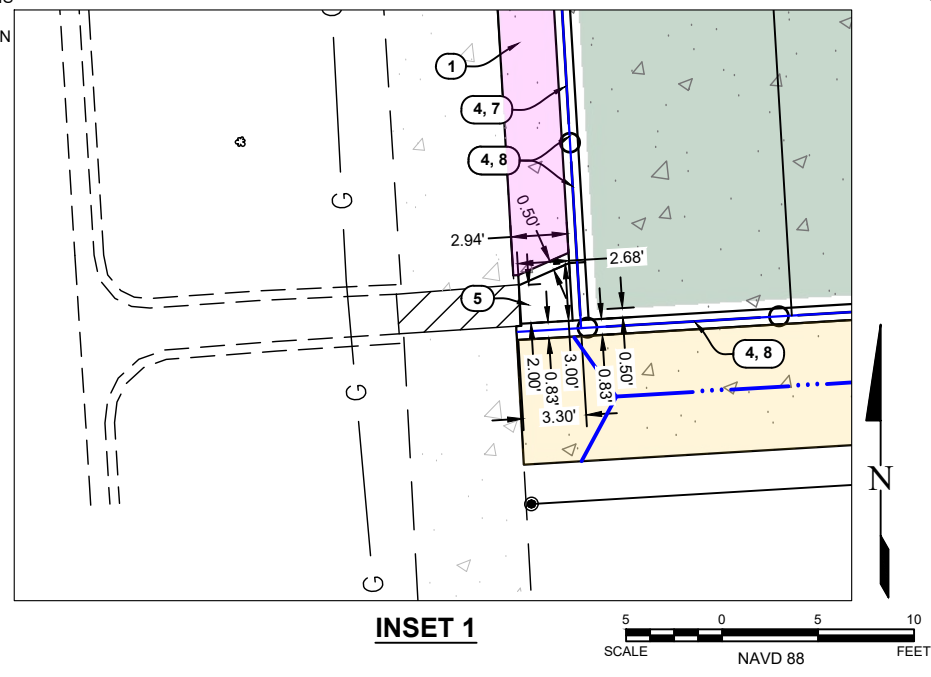
**TENNIS COURTS RECONSTRUCTION**  
VALLEY CITY PARKS AND RECREATION  
VALLEY CITY, NORTH DAKOTA  
**SITE LAYOUT PLAN**

**NOTE(S):**

- ALL DIMENSIONS ARE TO CENTER OF FENCE UNLESS OTHERWISE SPECIFIED.
- CONCRETE EXPANSION JOINTS SHALL BE SEALED. FENCE CONTRACTOR SHALL NOT DRILL OR ANCHOR INTO ANY OF THE POST-TENSIONING CABLES.
- VERIFY LIGHT BASE DIAMETER WITH MANUFACTURER/OWNER PRIOR TO INSTALLATION OF LIGHT BASE OR RETAINING WALL.
- CONTRACTOR SHALL INSTALL LIGHT BASE FIRST. FOOTING SHALL BE FORMED AROUND LIGHT BASE.
- PROVIDE ELECTRICAL TO RELOCATED BUILDING. ELECTRICAL OUTLET TO BE PLACED ON OUTSIDE OF BUILDING FACING TENNIS COURTS.
- ELECTRICAL OUTLETS TO BE PLACED ON CENTER LIGHT POLES FACING THE TENNIS COURTS.

- ALL BLENDED PLAYING LINES SHALL BE TEXTURED LINE PAINT WITHIN THE SAME FAMILY AS THE 78 FOOT COURT PLAYING SURFACE COLOR.
- ALL BLENDED PLAYING LINES SHALL TERMINATE 3 INCHES FROM THE 78 FOOT COURT LINES.
- ALL BLENDED PLAYING LINES SHALL BE 1 1/2" WIDE.
- ALL BLENDED PLAYING LINES SHALL BE MEASURED TO THE OUTSIDE EDGE OF THE PLAYING LINES, WITH THE EXCEPTION OF THE CENTER LINES WHICH SHALL BE MEASURED OUT TO CENTER.

- COURTS #1, #2 & #3 TO BE 78' COURT WITH 36'/60' TENNIS STRIPING PER USTA THREE 78 FOOT TENNIS COURTS WITH BLENDED PLAYING LINES GENERIC STRIPING PLAN DETAIL.



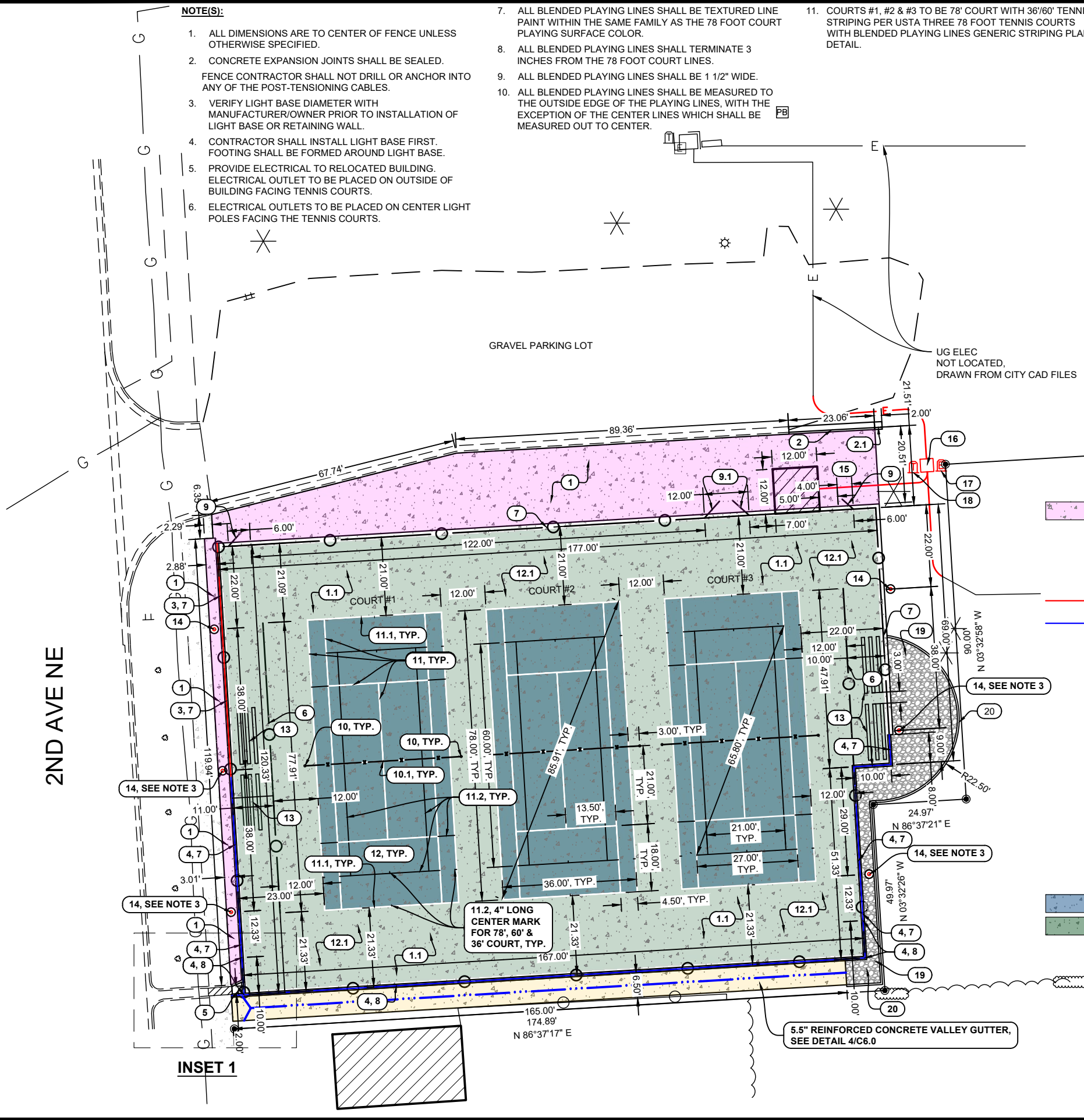
**INSET 1**

SCALE 0 5 10 FEET  
NAVD 88

99.89'  
N 86°37'17" E  
**LAYOUT KEYNOTES:**

- 1 4" CONCRETE SIDEWALK, SEE DETAIL 1/C6.0
- 1.1 5" POST TENSIONED CONCRETE, SEE DETAIL 5/C6.0, 6/C6.0 & 7/C6.0
- 2 CONCRETE CURB AND GUTTER, SEE DETAIL 1/C6.1
- 2.1 NOSE DOWN CURB, SEE DETAIL 4/C6.1
- 3 MONOLITHIC CURB WITH FENCE, SEE DETAILS 5/C6.1 & 9/C6.1
- 4 RETAINING WALL WITH FENCE, SEE DETAILS 6/C6.1, 7/C6.1 & 10/C6.1
- 5 5.5" REINFORCED CONCRETE FLUME, SEE DETAIL 2/C6.1
- 6 3" BLACK VINYL COATED CHAIN LINK FENCE, SEE DETAIL 1/C6.2 & 8/C6.1
- 7 10' BLACK VINYL COATED CHAIN LINK FENCE, SEE DETAIL 1/C6.2, 8/C6.1, 9/C6.1 & 10/C6.1
- 8 20' BLACK VINYL COATED CHAIN LINK FENCE, SEE DETAIL 1/C6.2, 9/C6.1 & 10/C6.1
- 9 4' X 10' BLACK VINYL COATED CHAIN LINK FENCE GATE, REFER TO SPECIFICATIONS
- 9.1 6' X 10' DOUBLE BLACK VINYL COATED CHAIN LINK FENCE GATE, REFER TO SPECIFICATIONS
- 10 DOUGLAS PREMIER RD-36 NET POSTS IN PVC SLEEVES, REFER TO SPECIFICATIONS
- 10.1 NETTING CENTER ANCHOR, REFER TO SPECIFICATIONS (SEE SPECIFICATIONS FOR NETS)
- 11 2" WHITE LINE PAINT, REFER TO SPECIFICATIONS
- 11.1 4" WHITE LINE PAINT, REFER TO SPECIFICATIONS
- 11.2 1 1/2" BLENDED PLAYING LINE, REFER TO SPECIFICATIONS
- 12 BLUE PLAYING SURFACE, REFER TO SPECIFICATIONS
- 12.1 GREEN PLAYING SURFACE, REFER TO SPECIFICATIONS
- 13 PORTABLE METAL BLEACHERS
- 14 LIGHT BASE LOCATION, SEE ELECTRICAL
- 15 RELOCATED BUILDING
- 16 RELOCATED ELECTRICAL TRANSFORMER
- 17 RELOCATED ELECTRICAL PEDESTAL
- 18 RELOCATED TELEPHONE PEDESTAL
- 19 3"-6" RIPRAP, 9" DEPTH ON WOVEN GEOTEXTILE FABRIC
- 20 CONCRETE LANDSCAPE CURB, SEE DETAIL 3/C6.1

SCALE 0 15 30 FEET  
NAVD 88



**INSET 1**