



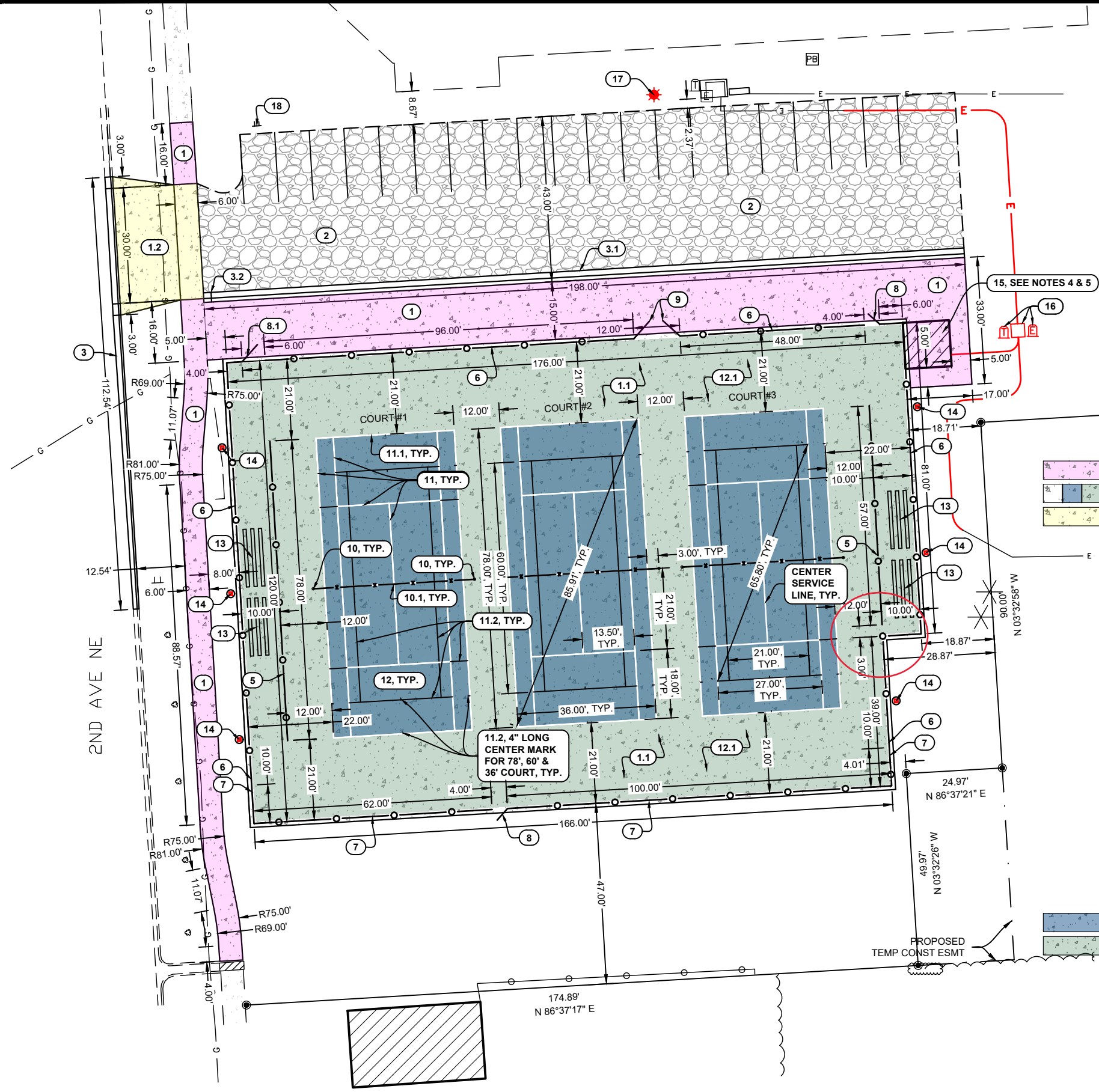
NO.	DATE	REVISION

DRAFTED  
HAV  
REVIEWED  
ADW  
PROJECT NUMBER  
2004-00170  
ISSUE DATE  
01/05/2022

**TENNIS COURTS RECONSTRUCTION**  
VALLEY CITY PARKS AND RECREATION  
VALLEY CITY, NORTH DAKOTA  
**SITE LAYOUT PLAN**

SHEET  
**C3.0**

- NOTE(S):**
- ALL DIMENSIONS ARE TO CENTER OF FENCE AND TOP BACK OF CURB UNLESS OTHERWISE SPECIFIED.
  - CONCRETE EXPANSION JOINTS SHALL BE SEALED.
  - FENCE CONTRACTOR SHALL NOT DRILL OR ANCHOR INTO ANY OF THE POST-TENSIONING CABLES.
  - GATE OPENING AT BUILDING WITH NO GATE. POSITION GATE OPENING CENTERED AT BUILDING DOOR CENTER.
  - PROVIDE ELECTRICAL TO RELOCATED BUILDING, SEE ELECTRICAL PLAN.
  - ALL BLENDED PLAYING LINES SHALL BE TEXTURED LINE PAINT WITHIN THE SAME FAMILY AS THE 78 FOOT COURT PLAYING SURFACE COLOR.
  - ALL BLENDED PLAYING LINES SHALL TERMINATE 3 INCHES FROM THE 78 FOOT COURT LINES.
  - ALL BLENDED PLAYING LINES SHALL BE 1 1/2" WIDE.
  - ALL BLENDED PLAYING LINES SHALL BE MEASURED TO THE OUTSIDE EDGE OF THE PLAYING LINES, WITH THE EXCEPTION OF THE CENTER LINES WHICH SHALL BE MEASURED OUT TO CENTER.
  - COURTS #1, #2 & #3 TO BE 78' COURT WITH 36'/60' TENNIS STRIPING PER USTA THREE 78 FOOT TENNIS COURTS WITH BLENDED PLAYING LINES GENERIC STRIPING PLAN DETAIL.



- LAYOUT KEYNOTES:**
- ① 4" CONCRETE SIDEWALK, SEE DETAIL 1/C5.0
  - ①.1 5" POST TENSIONED CONCRETE, SEE DETAIL 1/C5.1, 2/C5.1 & 3/C5.1
  - ①.2 6" CONCRETE DRIVEWAY, SEE DETAIL 1/C5.0
  - ② UNSTRIPED 4" GRAVEL PARKING LOT
  - ③ STANDARD CURB AND GUTTER, SEE DETAIL 4/C5.0
  - ③.1 MOUNTABLE CURB AND GUTTER, SEE DETAIL 4/C5.0
  - ③.2 NOSE DOWN CURB, SEE DETAIL 5/C5.0
  - ④ NOT USED
  - ⑤ 3' BLACK VINYL COATED CHAIN LINK FENCE, SEE DETAIL 1/C5.2 & 3/C5.3
  - ⑥ 10' CHAIN LINK FENCE, SEE DETAIL 2/C5.2 & 3/C5.3
  - ⑦ 20' CHAIN LINK FENCE, SEE DETAIL 3/C5.2 & 3/C5.3
  - ⑧ 4' X 8' CHAIN LINK FENCE GATE, REFER TO SPECIFICATIONS
  - ⑧.1 6' X 8' CHAIN LINK FENCE GATE, REFER TO SPECIFICATIONS
  - ⑨ 6' X 10' DOUBLE CHAIN LINK FENCE GATE, REFER TO SPECIFICATIONS
  - ⑩ DOUGLAS PREMIER RD-36 NET POSTS IN PVC SLEEVES, REFER TO SPECIFICATIONS
  - ⑩.1 NETTING CENTER ANCHOR, REFER TO SPECIFICATIONS (SEE SPECIFICATIONS FOR NETS)
  - ⑪ 2" WHITE LINE PAINT, REFER TO SPECIFICATIONS, SEE NOTES 6-10
  - ⑪.1 4" WHITE LINE PAINT, REFER TO SPECIFICATIONS, SEE NOTES 6-10
  - ⑪.2 1 1/2" BLENDED PLAYING LINE, REFER TO SPECIFICATIONS
  - ⑫ BLUE PLAYING SURFACE, REFER TO SPECIFICATIONS
  - ⑫.1 GREEN PLAYING SURFACE, REFER TO SPECIFICATIONS
  - ⑬ PORTABLE METAL BLEACHERS, PROVIDED BY OWNER
  - ⑭ FUTURE LIGHT POLE & BASE LOCATION. NOT INCLUDED IN PROJECT.
  - ⑮ RELOCATED BUILDING, SEE NOTES 4 & 5
  - ⑯ RELOCATED ELECTRICAL TRANSFORMER, ELECTRICAL PEDESTAL, & TELEPHONE PEDESTAL, SEE ELECTRICAL PLAN
  - ⑰ RELOCATED LIGHT, SEE ELECTRICAL PLAN
  - ⑱ RELOCATED ADA PARKING SIGN

