

**MONTANA-DAKOTA UTILITIES CO.
RATE 120 GAS EXTENSION ANALYSIS
NORTH DAKOTA
RATE 60 RESIDENTIAL**

Project Name	VC South Expansion	Location	Waterfront Meadows Addition
Developer	Valley City-Barnes County Development Corporation	Contact	Jessica Feist
Prepared By:	MS	Phone number:	701-490-9011
Date MAI Prepared:	8/20/2024	Total Residential Lots	28

Actual Project Economics

Total Main Installation Cost	\$ 162,133	Number of Homes/Customer Credit	28
Total Estimated Cost	\$ 248,325	Maximum Allowable Investment Credit (MAI)	\$ 68,343
Contribution Required	\$ 206,133	Cost per Lot	\$ 7,362

MAI Saturation Analysis

28					
Homes	Qty	Service Line \$	\$162,133	Mains	
100%	28	\$ 3,078	\$86,184	Service Line	
			\$248,317	Total Cost	
			\$68,343	Less MAI	
MAI	Qty	MAI / Home	\$206,124	Contribution Req.	
	28	\$ 2,441			
Cost per Lot	\$ 7,362	Cost per Customer	\$ 7,362		

14					
Homes	Qty	Service Line \$	\$162,133	Mains	
50%	14	\$ 3,078	\$43,092	Service Line	
			\$205,225	Total Cost	
			\$34,172	Less MAI	
MAI	Qty	MAI / Home	\$195,907	Contribution Req.	
	14	\$ 2,441			
Cost per Lot	\$ 6,997	Cost per Customer	\$ 13,993		

21					
Homes	Qty	Service Line \$	\$162,133	Mains	
75%	21	\$ 3,078	\$64,638	Service Line	
			\$226,771	Total Cost	
			\$51,258	Less MAI	
MAI	Qty	MAI / Home	\$201,016	Contribution Req.	
	21	\$ 2,441		Total Contribution	
Cost per Lot	\$ 7,179	Cost per Customer	\$ 9,572		

9					
Homes	Qty	Service Line \$	\$162,133	Mains	
33%	9	\$ 3,078	\$27,702	Service Line	
			\$189,835	Total Cost	
			\$21,968	Less MAI	
MAI	Qty	MAI / Home	\$192,259	Contribution Req.	
	9	\$ 2,441			
Cost per Lot	\$ 6,866	Cost per Customer	\$ 21,362		

18					
Homes	Qty	Service Line \$	\$162,133	Mains	
66%	18	\$ 3,078	\$55,404	Service Line	
			\$217,537	Total Cost	
			\$43,935	Less MAI	
MAI	Qty	MAI / Home	\$198,826	Contribution Req.	
	18	\$ 2,441		Total Contribution	
Cost per Lot	\$ 7,101	Cost per Customer	\$ 11,046		

7					
Homes	Qty	Service Line \$	\$162,133	Mains	
25%	7	\$ 3,078	\$21,546	Service Line	
			\$183,679	Total Cost	
			\$17,086	Less MAI	
MAI	Qty	MAI / Home	\$190,799	Contribution Req.	
	7	\$ 2,441		Total Contribution	
Cost per Lot	\$ 6,814	Cost per Customer	\$ 27,257		

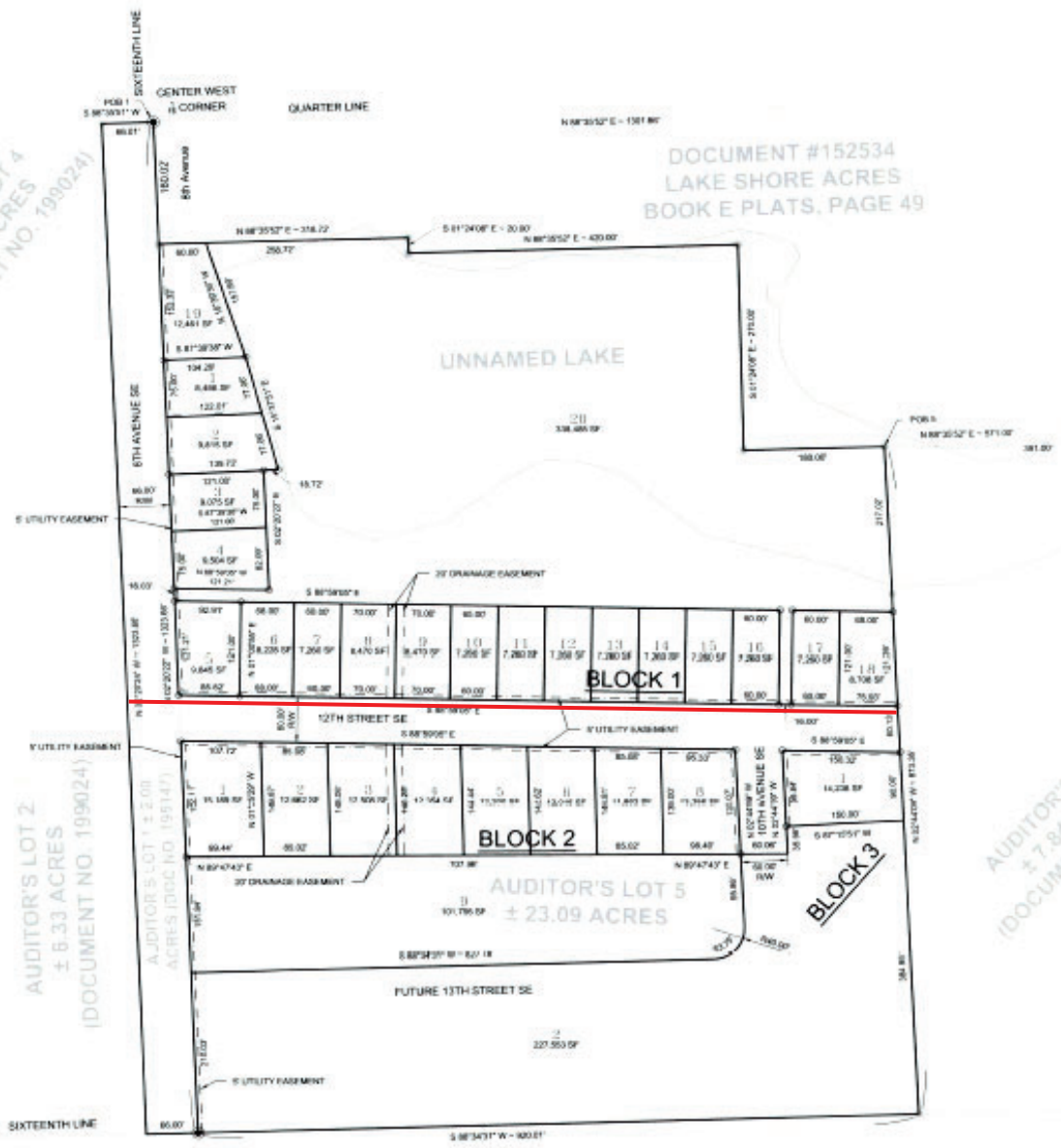
Project Notes

Includes Tax Gross-up if contribution is over \$100,000. Project revised 8-20 per Director of Economic Development request. Project has been revised for mains and services to serve 28 lots within Waterfront Meadows Addition. Required contribution and MDU's Maximum Allowable Investment is contingent upon Director level approval. The economic analysis is provided with the understanding that further approval may be required and therefore should be considered high level and subject to change.



AUDITOR'S LOT 4
± 27.70 ACRES
(DOCUMENT NO. 199024)

DOCUMENT #152534
LAKE SHORE ACRES
BOOK E PLATS, PAGE 49



AUDITOR'S LOT 2
± 6.33 ACRES
(DOCUMENT NO. 199024)

AUDITOR'S LOT 7 ± 2.09
ACRES (DOC NO. 195147)

BLOCK 1

BLOCK 2

AUDITOR'S LOT 5
± 23.09 ACRES

BLOCK 3

AUDITOR'S LOT 6
± 7.84 ACRES
(DOCUMENT NO. 2)

SOUTH 1/2 OF THE SOUTH WEST OF SECTION 27
PARCEL NO. 41-2730310
DOCUMENT NO. 195147