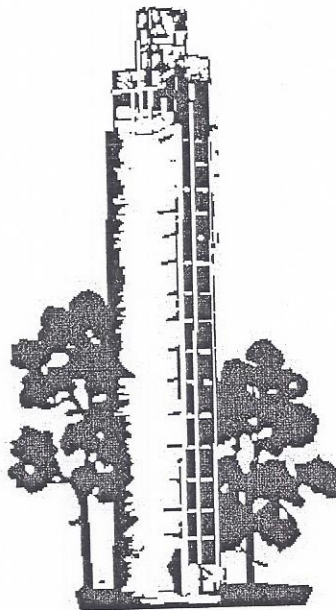


Jefferson Police Department 2016 Annual Report



“We are dedicated to enhancing public safety and maintaining the quality of life
for the community we serve”

Mark A. Clouse
Chief of Police

Jefferson Police Department 2016 Annual Report

This annual report details the various activities of the Jefferson Police Department including statistics of departmental activity. The reader should keep in mind that the professionalism of the department would not be possible without dedication of its members, and the support of the community they serve.

Our Mission:

The Jefferson Police Department is dedicated to enhancing public safety and maintaining the quality of life for the community we serve.

Facility:

The Jefferson Police Department operates out of the Greene County Law Enforcement Center. The building was constructed in 1974. We share the facility with the Greene County Sheriff's Office, who staffs the Communication Center and the Jail. We share many of the costs related to the operation and maintenance of the facility. It is our constant goal to identify and implement ways to reduce expenses to operate the facility as economically as possible.

Staffing:

The Jefferson Police Department is currently staffed with 8 full time employees. Of the 8 sworn officers, there is a Chief of Police, 1 Captain, 1 Sergeant and 5 Patrol Officers. Officers are on duty 24 hours a day, 7 days a week.

The Sergeant and Patrol Officers work rotating shifts. Patrol Officers work four months of days and then four months of nights in an effort to provide an established work pattern. Officers and the Sergeant work twelve hour shifts and work two days on, two days off, three days on, two days off, two days on and three days off. This schedule allows the officer a three day weekend off every other weekend. The Captain works primarily 8 hour weekday shifts, but floats throughout the entire weekly schedule as needed.

The following is an overview of our staffing assignments:

Chief – Chief Executive of the Jefferson Police Department who serves as the final department authority in all matters of policy, operations and discipline. The Chief of Police is responsible for the administration and/or oversight of department operations, Internal Affairs and serves as the Public Information Officer. The Chief of Police plans and supervises programs of crime prevention and detection, traffic and safety regulations; determines departmental policies; directs enforcement of laws and ordinances, vice control and suppression; maintains effective manpower in the patrolling districts; conducts research, evaluates operating techniques and procedures and makes recommendations for improvements as necessary; coordinates activities with other city, county, state, and federal law enforcement agencies; confers with city officials, civic groups and citizens on law enforcement problems; assists in the development of laws and ordinances regarding public safety; prepares an annual

departmental budget; prepares work schedules; and supervises the preparation of reports and reviews reports submitted by subordinates.

Captain - Participates in and directs police personnel in the prevention of crime, investigations and apprehension of offenders; assigns personnel tasks and duties; ensures that all marked police cars are serviced and in good repair; inspects and checks shift's case cards and reports for accuracy; completes case cards, reports and forms, takes statements from witnesses and affidavits from victims; supervises; prepares and transmits communications, instructions and policy to officers; receives complaints or reports (phone and in person) and directs subordinates in handling; confers with a superior on general departmental policies and procedures and makes recommendations for improvements; cooperates with other law enforcement agencies in the apprehension of criminals. Investigates major crimes reported to the department.

Sergeant – The Sergeant's position is a non-administrative position. The Sergeant, under direction, is to supervise and coordinate activities of subordinate officers during an assigned shift, and to perform related duties as required. Assigns police officers to designated posts; informs members of command regarding changes in regulations and policies and of communication from Chief and Captain to command; carries out administrative orders; visits the scenes of crimes, emergencies or accidents to assist and supervises subordinates; personally handles the more difficult complaints and problems; instructs subordinates in police patrol work and related law enforcement problems; supervises and participates in investigations of violations of federal, state and local laws; collects and preserves evidence; apprehends and arrests law violators; submits reports on condition of station equipment and on daily activities to supervisors; reads and forwards reports of subordinates to superior officers; serves arrest warrants, testifies in court, directs traffic, investigates accidents, issues summons, gives information, renders first aid, operates radar; ensures proper appearance of the shift; may perform duties described under Police Officer.

Patrol Officer - Under general supervision, enforces local, state and federal laws and ordinances; performs criminal investigations, traffic control and investigations; and to perform related duties as required. Patrols an assigned area to control traffic, prevent crimes and apprehend violators; responds to radio messages or telephone instructions and appears at scenes of emergency, disorder or crime; familiarizes self with assigned area and with persons living in area; notes suspicious person, establishments, or activities, and takes immediate action or reports observances to a superior, directs traffic; appears in court on and off duty; transports prisoners; reports to scenes of accidents, renders first aid, and investigates causes and results of accidents; completes written reports of findings; issues summons; reports abandoned or damaged vehicles; provides escort services for parades, funerals, or public meetings; investigates circumstances of crime and questions witnesses; helps examine crime scene to obtain clues and gather evidence; participates in training and practices the use of firearms; occasionally relieves and acts for a superior officer, answers citizen inquiries; arrests or assists in arrest of suspects; fingerprints and photographs subjects, completes various forms and reports.

Vehicles – The department maintains a fleet of four vehicles for daily operations. Our current duty vehicle is a fully marked 2016 Ford Utility Interceptor patrol vehicle. This vehicle is operated by our

Duty Officers and is in service 24 hours a day, 7 days a week. Night Supervisors and overlap officers utilize a fully marked 2014 Ford Utility Interceptor. The Chief of Police operates an unmarked 2011 Chevrolet pickup. The Captain operates an unmarked 2013 Interceptor. This vehicle is also utilized for transportation of personnel to training opportunities and the transportation of items to other agencies.

Calls For Service And Investigations:

In 2016 the Jefferson Police Department saw only a slight increase in call volume, which still set a record for the number of calls responded to in a year. Officers answered a total of 3,562 calls for service compared to 3,549 calls for service in 2015.

50% of our calls were Public Service in nature. 374 calls for service in this category were concerning animal complaints. This is a slight drop from the previous year. There were 169 open doors investigated and officers responded to 131 alarm activations, 27 fire complaints, 19 missing person calls, and the department provided 51 funeral escorts. The police department answered 327 agency assist requests which include other law enforcement agencies, medical and fire calls. We answered 120 Calls for Service that were Casino related in nature. Our department invested 86 man hours to Casino related calls. This is a 105% increase in man hours over the previous year.

Quality of life issues is of particular focus for the police department. 38% of the calls answered were criminal in nature. This is up 3% from 2015. As usual, harassment and theft were the most prevalent in this category. Included in those quality of life issues are reports of disturbances, drug offenses and alcohol related events. Officers answered 156 Harassment complaints and took 237 reports of theft. Theft reports increased 27% in 2016. Eleven people were arrested for Operating a Motor Vehicle While Under the Influence and we filed 61 drug related charges were filed in 2016, which is a 53% increase over the previous year. There were 18 arrests for Public Intoxication and 4 people were charged with Possession of an Alcoholic Beverage under Age 21 in 2016. Often time disturbance calls are a direct result of alcohol consumption so a prompt response is necessary to minimize the potential for these incidents to grow into something more serious such as fights, assault and criminal mischief. In 2016 officers responded to 17 fight calls, 51 assault cases and 65 criminal mischief complaints, which is down slightly from the previous year.

Domestic Violence is a national problem, and Jefferson is not immune to this wave of violence. The members of our department take an aggressive approach to this behavior, while working within the limits of the Iowa Domestic Abuse statute. In 2016 the Jefferson Police Department made 32 arrests and responded to approximately 98 calls of reported domestic abuse. The number of arrests in this category doubled compared to 2015 numbers. There were 13 accusations of Sexual Assault with charges being filed in 2 of those cases.

In Jefferson, there were 237 reported thefts in 2016. This number is up from 186, or 27% in 2015. Our department took 2 reports of forgery. Often time criminals are no more than opportunists. While the likelihood of eliminating thefts is doubtful, the public can certainly help themselves from becoming a victim of theft by doing what they can to prevent someone from obtaining personal information to include social security, driver's license and account information. Instances of identity theft and

deception schemes often take place by persons who are not in the state of Iowa or within the United States, which makes investigation difficult. What is important for residents to remember is that if it sounds too good to be true, it probably is.

There were 95 Burglary calls reported to the police department in 2016. This is up from 65 reports last year. This is a 46% increase. Burglaries in this category are reported as both to residences, structures and outbuildings, as well as vehicles as they are considered occupied structures. As with most property crimes, burglary suspects are often opportunists, who are not looking for confrontation, but instead looking to slip in and out without detection taking valuables as they can. Homeowners can help to detour this activity by making sure doors are locked, vegetation is kept trimmed back and by making sure outside lighting is adequate to illuminate entryways. Vehicles should be locked when unattended and the keys removed from the ignition. Valuables should be hidden out of sight. The public plays an incredible role in property crime prevention. When a resident or business owner observes something out of the ordinary, they are encouraged to contact the police department.

Traffic related complaints comprised of 12% of the calls answered in 2016. While the percentage of calls answered in this category remained basically the same, by using a combination of citations and warnings, officers are educating motorists on matters of traffic safety while taking enforcement action by stopping the motorist and providing them an opportunity to take their own corrective action.

Officers investigated 123 property damage accidents, 12 personal injury accidents and 26 hit and run accidents. This was an increase over last year in these areas. 46 citations were issued for Driving Suspended, Revoked or Barred. Officers issued 385 traffic citations, 154 Parking Tickets and issued 621 traffic related warnings.

The department participated in the sTEP program through the Governor's Safety Traffic Bureau. The focus of that program is to focus on traffic enforcement during set weeks throughout the year, usually around holidays, to promote safety. The goal is to reduce traffic fatalities and reduce the number of impaired drivers. In compensation the department received a new MPH Radar Unit, which will be installed in our new vehicle in early 2018. The department also received two Alco Sensor PBT's.

Community Involvement:

The Jefferson Police Department places a strong emphasis on our School Patrol Program. It is one of our priorities to have our marked units highly visible both before and after school. Officers also participated in presentations at the Greene County High School, Elementary School, The Early Learning Center and participated in Toddler Fest at the Community Center. Officers were part of the TEEN MAZE Project at the Boone County Fairgrounds. Officers made their presence known at sporting events to include basketball, football games and cross country meets.

Officers routinely conducted foot patrol in the downtown area and conducted business checks in both residential and business areas which promote community interaction and deter crime through high visibility. 169 Business doors were found unsecured during 2016.

The department also participates in a Vacation Watch program. Homeowners can notify the department of dates they will be away from their residence for extended periods of time and day officers check the resident's house for them.

Community Events included the Market to Market Relay, Peddler's Jamboree, and the Bell Tower Festival. Officers provided for a safe environment during these activities.

The department supports the P.A.W.S. organization as we have interaction with placement of animals at the Animal Holding Facility and we work hand in hand on concerns the organization may have on animal issues in our community.

The police department regularly attended regional monthly intelligence meetings, monthly meetings with Juvenile Courts and School Administration, Domestic Violence Coalition meetings, quarterly Board of Director Meetings with the Central Iowa Drug Task Force and Greene County Emergency Preparedness Multi- Jurisdictional Meetings at the Greene County Medical Center.

We continue to support local businesses and work with the Greene County Emergency Management Agency for planning and response of large scale incidents.

The department maintains a strong working relationship with the Greene County Sheriff's Office, local fire departments, emergency care providers, state and federal agencies.

Training:

Training of entire staff remains a priority for the police department. There are mandatory training requirements in place established by the Iowa Law Enforcement Academy to obtain, and maintain police officer and instructor requirements. We attempt to provide quality training in the most feasible manor which complements our officer's professionalism.

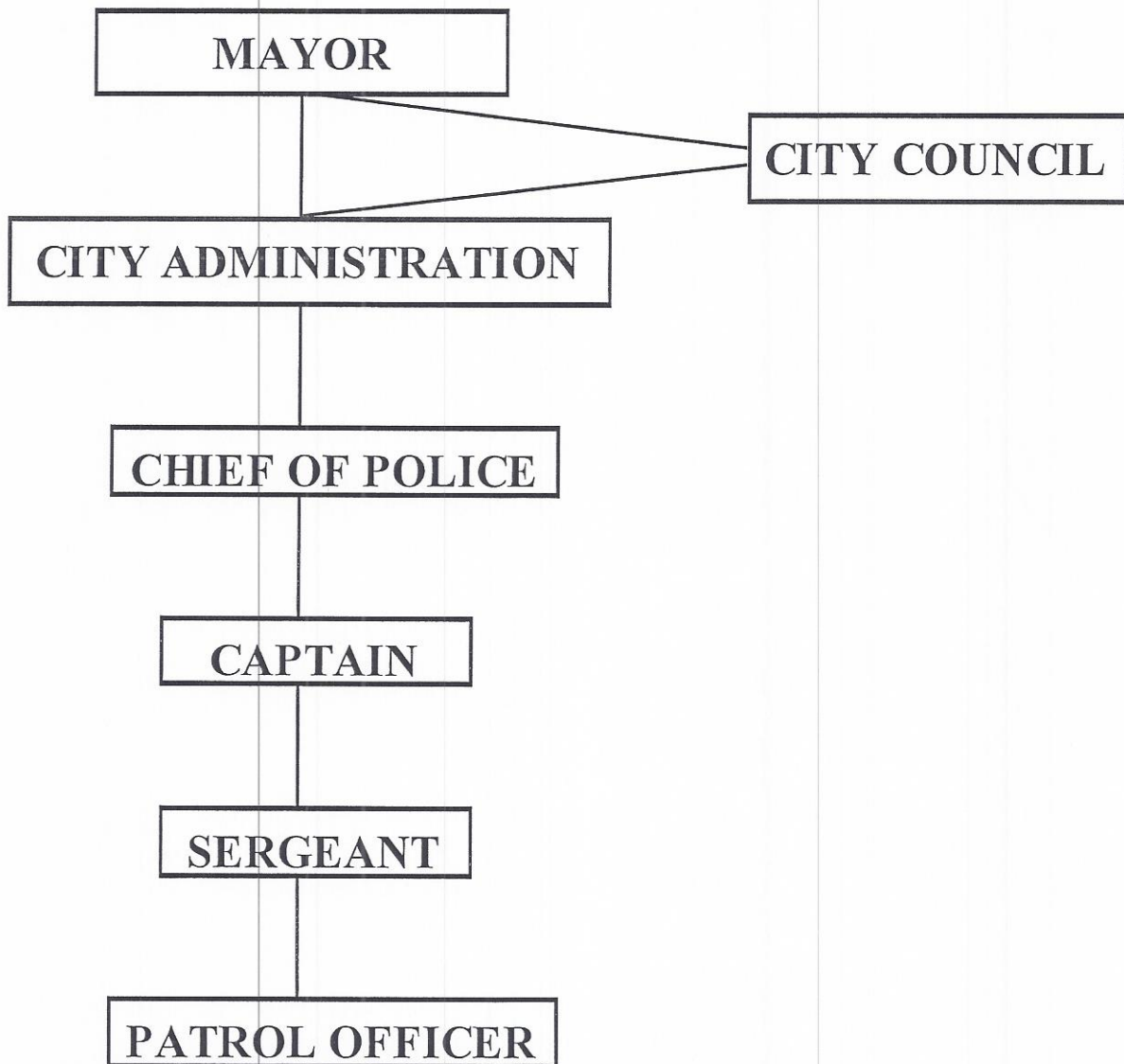
Vision:

In 2017 we will continue to dedicate our efforts to enhancing public safety and maintaining the quality of life for the community we serve.

Respectfully,
Mark A. Clouse
Chief of Police

DEPARTMENTAL STRUCTURE

The Mayor appoints the Chief of Police who is responsible to the Mayor of departmental affairs.



Jefferson Police Department

2016 Call Activity

2016

Public Service: Total 1805 = 50%

Animal: 374

Public Service Other: 605

Agency Assist: 327

Escort: 51

Open Door: 169

Alarm: 131

Missing Person: 19

Civil: 90

Fire: 27

Door Unlock: 12

Criminal: Total 1336 = 38%

Assault: 51

Burglary: 95

Criminal Mischief: 65

Domestic: 98

Sexual Assault: 13

Drugs: 64

Fight: 17

Public Intox: 7

Poss. Underage: 3

OWI: 13

Harassment: 156

Criminal Other: 427

Forgery: 8

Identity Theft: 11

Theft: 237

Trespass: 71

Traffic: Total 440 = 12%

Accident – PD: 123

Accident – PI: 12

Accident – H&R: 26

Accident – F: 1

Abandoned Vehicle: 11

Parking: 53

Traffic Other: 214

Total: 3562 Calls for Service

Casino Related Calls for Service: 2016 120 Calls / 86 Man Hours

Jefferson Police Department

2015 / 2016 Call Activity Comparison

2015

Public Service:	Total 1852 = 52%
Animal:	426
Public Service Other:	614
Agency Assist:	318
Escort:	49
Open Door:	150
Alarm:	121
Missing Person:	46
Civil:	102
Fire:	20
Door Unlock:	6

Criminal:

	Total 1247 = 35%
Assault:	59
Burglary:	65
Criminal Mischief:	68
Domestic:	76
Sexual Assault:	10
Drugs:	53
Fight:	16
Public Intox:	7
Poss. Underage:	4
OWI:	18
Harassment:	167
Criminal Other:	403
Forgery:	2
Identity Theft:	11
Theft:	186
Trespass:	102

Traffic:

	Total 350 = 13%
Accident – PD	118
Accident – PI	15
Accident H&R	22
Accident – F	0
Abandoned Vehicle:	6
Parking:	94
Traffic – Other:	196

Total: 3549 Calls for Service

2016

Public Service:	Total 1805 = 50%
Animal:	374
Public Service Other:	605
Agency Assist:	327
Escort:	51
Open Door:	169
Alarm:	131
Missing Person:	19
Civil:	90
Fire:	27
Door Unlock:	12

Criminal:

	Total 1336 = 38%
Assault:	51
Burglary:	95
Criminal Mischief:	65
Domestic:	98
Sexual Assault:	13
Drugs:	64
Fight:	17
Public Intox:	7
Poss. Underage:	3
OWI:	13
Harassment:	156
Criminal Other:	427
Forgery:	8
Identity Theft:	11
Theft:	237
Trespass:	71

Traffic:

	Total 440 = 12%
Accident – PD	123
Accident – PI	12
Accident H&R	26
Accident – F	1
Abandoned Vehicle:	11
Parking:	154
Traffic Other:	385

Total: 3562 Calls for Service

Greene County LEC Arrest Data

<u>Charge</u>	
<u>Animal at Large – Prohibited</u>	6
<u>Animal License Required</u>	11
<u>Assault – Serious</u>	3
<u>Assault – Simple</u>	7
<u>Assault on Persons Engaged in Certain Occupations</u>	5
<u>Assault with Dangerous Weapon – Aggravated</u>	1
<u>Burglary – 3rd Degree</u>	23
<u>Careless Driving</u>	4
<u>Carrying Weapons</u>	2
<u>Child Endangerment</u>	1
<u>Criminal Mischief – 2nd Degree</u>	5
<u>Criminal Mischief – 3rd Degree</u>	1
<u>Criminal Mischief – 4th Degree</u>	7
<u>Criminal Mischief – 5th Degree</u>	6
<u>Curfew Violation</u>	1
<u>Dark Windows</u>	8
<u>Defective Muffler</u>	5
<u>Disorderly Conduct</u>	17
<u>Domestic Abuse Assault – Felony</u>	10
<u>Domestic Abuse Assault – Aggravated</u>	8
<u>Domestic Abuse Assault – Serious</u>	4
<u>Domestic Abuse Assault – Simple</u>	10
<u>Driving While Barred</u>	7
<u>Driving While Revoked</u>	8
<u>Driving While Suspended</u>	31
<u>Eluding</u>	1

This data is private and shall not be distributed without authorization.

This report generated on 03/15/2017 at 09:20:39 by Mark Clouse

Excessive Speed	71
Failure to File SR-22 Insurance	2
Failure to Have a Valid License	13
Failure to Maintain Control	16
Failure to Obey Stop Sign	34
Failure to Prove Security Against Liability	41
Failure to Stop in Safe Assured Clear Distance Ahead	5
Failure to Use Headlamps	0
Failure to Wear Safety Belt	11
Failure to Yield Half of Roadway	2
Failure to Yield to Vehicle on the Right	12
Failure to Yield Upon Entering Through Highway	1
Fail to Yield Upon Left Turn	1
Following Too Closely	0
Forgery	10
Harassment – Aggravated	2
Harassment – Simple	3
Interference with Official Acts	14
Minor Using Tobacco	2
No Parking Zone	1
Open Container of an Alcoholic Beverage in a Motor Vehicle	1
Operating Motor Vehicle While Under the Influence – 1 st Offense	7
Operating Motor Vehicle While Under the Influence – 2 nd Offense	2
Operating Motor Vehicle While Under the Influence - 3 rd Offense	1
Operation without Owner’s Consent	1
Operation without Registration	39
Parked Across Sidewalk	18
Parked Across Sidewalk – Failure to Comply With City Parking Violation	3
Parked Facing Wrong Direction	14

This data is private and shall not be distributed without authorization.

This report generated on 03/15/2017 at 09:20:39 by Mark Clouse

Parked Facing Wrong Direction – Failure to Comply with City Parking Violation	4
Parking – Snow Ordinance	81
Parking Between Lot Line and Curb Line	12
Parking Between Lot Line and Curb Line – Failure to Comply with City Parking Violation	5
Parking Past 48 Hours	19
Possession of Controlled Substance – Marijuana – 1 st Offense	11
Possession of Controlled Substance – Marijuana – 2 nd Offense	1
Possession of Controlled Substance – Marijuana – 3 rd Offense	5
Possession of Controlled Substance – Methamphetamine – 3 rd Offense	8
Possession of Controlled Substance – Methamphetamine – 1 st Offense	9
Possession of Alcohol Under Age – 1 st Offense	4
Possession of Drug Paraphernalia	27
Providing Alcohol to Underage Person	1
Public Intoxication – 1 st Offense	16
Public Intoxication – 2 nd Offense	0
Public Intoxication – 3 rd Offense	2
Reckless Driving	4
Theft – 1 st Degree	2
Theft - 2nd Degree	1
Theft - 3rd Degree	4
Theft – 4 th Degree	3
Theft – 5 th Degree	34
Trespass – Serious Misdemeanor	1
Trespass – Simple Misdemeanor	8
Truck/Trailer/RV Parking	30
Truck/Trailer/RV Parking – Failure to Comply With City Parking Violation	6
Turning from Improper Lane	1
Unlawful Possession of Prescription Drug	3
Unlawful Use of Credit Card	4

This data is private and shall not be distributed without authorization.

This report generated on 03/15/2017 at 09:20:39 by Mark Clouse

<u>Unsafe Backing Upon a Highway</u>	<u>12</u>
<u>Violation of Conditions of Restricted License</u>	<u>3</u>
<u>Violation of Protective Order</u>	<u>20</u>
<u>Violation of Protective Order – Aiding and Abetting</u>	<u>0</u>

This data is private and shall not be distributed without authorization.

This report generated on 03/15/2017 at 09:20:39 by Mark Clouse