

CLASSICAL

KING FM 98.1



Annual Report 2021—2022

Board of Directors



Directors

Jim Duncan, Chair

Retired Chairman & CEO, Sparling Corporation

Susan Harmon, Vice Chair

Co-Founder & Former Managing Director, Public Media Company

Kevin P. Fox, Treasurer

Retired, Senior Vice President, US Trust, Bank of America Private Wealth Management

Jon Rosen, Secretary

The Rosen Law Firm

Diana Carey

Attorney, Karr Tuttle Campbell

Steve Clifford

Retired CEO, KING Broadcasting Co

Susan MacGregor Coughlin

Board of Directors, Seattle Opera

Charley Dickey

Retired President, Claesen LLP

Brian Grant

Psychiatrist

Douglas Jackson

General Counsel, Magnus Investments, LLC

Neil Jordan

Worldwide General Manager Health Industry, Microsoft Corporation

Naomi Minegishi

Community Representative

Steve Mowe

President, Nick's Custom Boots

Raymond Tymas-Jones, Ph.D.

President, Cornish College of the Arts

Christopher T. Bayley

President Emeritus
Chairman, Stewardship Partners

Ex-Officio Board Members

Brenda Barnes

CEO, Classical KING FM 98.1

Krishna Thiagarajan

CEO, Seattle Symphony

Christina Scheppelmann

General Director, Seattle Opera

Michael Greer

President & CEO, ArtsFund

Douglass A. Raff

Principal, Riddell Williams P.S

From CEO Brenda Barnes



Thank you for your generous support this year. We can't say that loudly enough or often enough because none of the work we do would be possible without you.

In this report, you'll read about the great work our staff has done this year during a time of transition. Two long-term staff members (Office Manager Noah Dretske

and Director of Operations Rachele Hales) made shifts in their careers with our full support and encouragement after a decade or more of dedication to the station.

Our Chief Development Officer Blandine van de Velde relocated to Boston due to a wonderful career opportunity for her husband. We are thrilled she is now Director of Individual Giving for the Boston Symphony. Finally, Blaine Shepherd, who did a wonderful job for the past two years as Chief Content Officer, decided she wanted to shift to half-time work and focus on corporate and nonprofit sponsorships. We love Blaine and were happy to have an opportunity to create a position that works well for her and us.

Departures also provide the opportunity to bring new kinds of expertise into the organization, and we took full advantage. We welcomed Barbara Dolby as Chief Development Officer and promoted Dave Beck to Chief Content Officer. Barbara comes to us with 25 years of development experience, most recently at Seattle University. She will focus on building an even stronger major donor program for the organization. Dave has a long

history in public radio, deep knowledge of classical music, and the trust of the Classical KING audience and staff. He is excited about working with our announcers to keep our programming fresh.

Instead of hiring an office manager, we are outsourcing some of our financial workload. Having only two people carrying the load of administration, finance, and human resources for our organization was risky and unsustainable. We're working with the Public Media Company (<https://www.publicmedia.co/>), so we have a larger staff and more expertise handling finance for our organization at a cost lower than that of a full-time staff position. Instead of hiring another Director of Operations, we added Terrill McKinney, our new Director of Information Technology, to our team. Our broadcast equipment is all computer-based, and we need robust IT expertise to keep donor data safe, and ensure our technological infrastructure operates without a glitch 24/7.

While considerable change was happening behind the scenes, our focus was always on ensuring none of the internal changes were apparent to you and our other donors and listeners. Fortunately, we have dedicated staff willing to work even harder than usual to fill gaps left by vacancies while handling their regular duties. Because of them and you, Classical KING had another great year, as you will see when you turn the pages of this report.

With gratitude for your support,

Brenda Barnes

Brenda Barnes, CEO
Classical KING FM 98.1



From the Board President

I join Brenda in thanking our staff for their dedication and magnificent work this year. We are so fortunate to have Brenda's inclusive leadership of staff and implementation of our strategic plan. I have the honor of leading one of the best boards I have ever encountered, and our board members have worked equally hard to support the organization and advance the strategic plan.


We established an ongoing Strategic Planning Committee to monitor the organization's progress towards its ambitious goal of diversifying our audience and developed an initial set of metrics to guide us. We welcomed Dr. Quinton Morris as Artist-Scholar in Residence and listened with pride to his first *Unmute the Voices* program. We participated in diversity training and added four additional positions to the board to ensure we have more diverse perspectives governing the organization. As I write, the board is engaged in analyzing the Classical KING brand to develop a new logo, website, and app that we will unveil in a few months. We are grateful to States of Matter for guiding us in this process.

Every member of our board is a financial supporter of the organization. We have exceptional attendance at every board meeting, and every board member is engaged, leaning in to support and advise our CEO. We have a wonderful and productive partnership between the board and staff that galvanizes the organization.

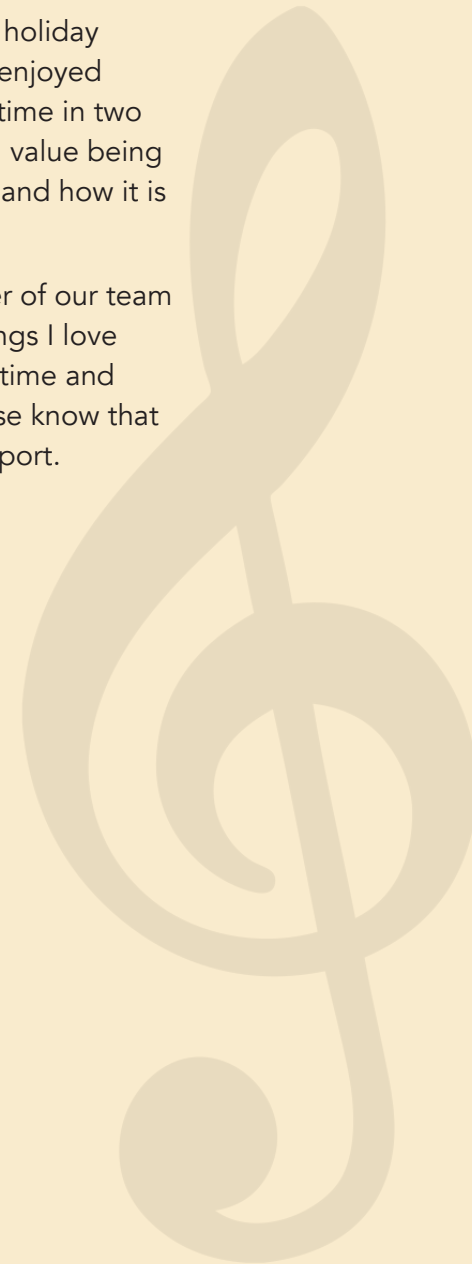
In between COVID variants, we squeezed in a holiday celebration for staff and board members who enjoyed spending time together in person for the first time in two years. It was a magical evening because we all value being a part of a great organization, Classical KING, and how it is moving forward in exciting ways.

Thank you so much for being a critical member of our team and for your steadfast support. One of the things I love most about Classical KING is that anyone, anytime and anywhere can listen to KING FM for free. Please know that everyone on the board is grateful for your support.

With deepest gratitude,



James R. Duncan
President
Board of Directors of Classical KING



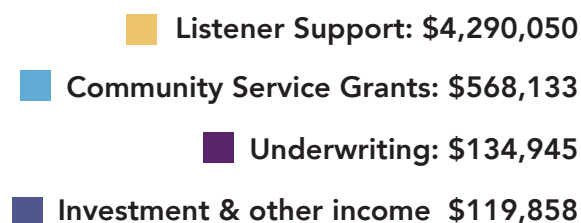
2021 Financial Overview

Thanks to your support, Classical KING is in a solid financial position. Although our underwriting/program sponsorship funding is still down significantly from pre-pandemic levels, relief funding from the Corporation for Public Broadcasting and increased listener support have filled the gap. It is truly your support that has kept Classical KING strong in the past year.

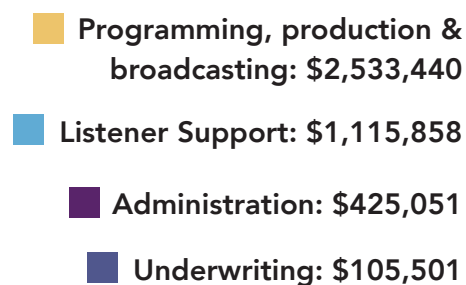
Prior to 2020, Classical KING had no reserve funding or endowment funding. We have stewarded our resources carefully, and we now have an operating reserve and a board-designated reserve we could tap in the event of an emergency. We also have a strategic framework and a five-year financial plan to support the work ahead. Classical KING is operating in accordance with best practices in the nonprofit field.

2021 was another difficult year for the entire arts industry, and Classical KING must remain strong to help our performing arts partners recover from a devastating two years. Your support has kept us financially sound and in a position to help the entire sector.

2021 REVENUE: \$5,112,986



2021 EXPENSES: \$4,179,850



Programming



Dave Beck Stepping in as Classical KING's New Chief Content Officer

With 36 years of public radio under his belt, awards for on-air interviews, and numerous accolades for his cellist skills, we were beyond excited to have midday host Dave Beck transition into an even larger role as Chief Content Officer. It has been a thrill to watch Dave use his decades of experience to take on a management role off-air, helping to grow Classical KING's programming since stepping into this new position in winter 2021.

Welcome Back Lisa Bergman with *The Classical Dinner Hour*

After joining the Classical KING family as the host of the station's Explore Music series in 2012, Lisa Bergman took time off beginning in 2020, officially returning to the station with her new program, *The Classical Dinner Hour* in the winter of 2021. Lisa's history as an accomplished musician, as well as her varied musical and radio background makes her the perfect host for your evening playlist. Join Lisa every weekday from 6-7pm for *The Classical Dinner Hour*.



Bach's Lunch Revamp with Ted Askew

What's new in the world of Johann Sebastian is the focus of the newly revamped *Bach's Lunch* featuring host Ted Askew. The relaunch of this long-running feature offers expanded insights into Bach's life and music. With new recordings and special surveys of the composer's amazingly prolific catalog, *Bach's Lunch* continues to delight listeners with sacred masterworks, solo instrumental suites, and favorites like the Brandenburg Concertos. Take a seat at the *Bach's Lunch* table weekdays at noon.

Broadcast Concerts and *Northwest Focus LIVE* are Back!

After a two-year hiatus, live performance made a comeback on Classical KING in the winter of 2022. As our performing arts partners returned to the stage, we resumed our five-decade tradition of live broadcasts from the Winter and Summer Festivals of the Seattle Chamber Music Society. Dave Beck hosted the Winter Festival concerts, and Peter Newman was back in the booth at Nordstrom Recital Hall for four weeks of performances at the Seattle Chamber Music Society Summer Festival.

Our Seattle Symphony concert broadcasts, captured live at Benaroya Hall, returned to Friday evenings. This long-standing Classical KING/SSO collaboration featured numerous performances conducted by women and people of color. We were delighted to feature guest-conductor Jonathon Heyward, newly appointed music director of the Baltimore Symphony Orchestra and one of the most exciting conductors on the international scene. Other highlights include broadcasts of world premiere performances by SSO Composer-in-Residence Reena Esmail and the annual SSO Celebrate Asia Concert. For opera fans, we were at McCaw Hall to capture and present the return of live Seattle Opera performances for airing on Saturday mornings.

Our in-studio performance program, *Northwest Focus LIVE*, returned with an appearance by Classical KING's beloved announcer and in-house pianist, Lisa Bergman. Surrounded by a rapt audience hanging on her every story and note, Lisa treated listeners to brilliant playing and a warm and witty musical conversation with Classical KING's Sean MacLean.



Northwest Focus LIVE host Sean MacLean interviews flutist Meg Takezawa.



The Seattle Arts Fellowship

In 2022, Classical KING welcomed its first Seattle Arts Fellow, Myah Rose Paden. Classical KING joins Seattle Opera, Seattle Symphony, and Pacific Northwest Ballet in offering this year-long fellowship to future arts leaders who identify as Black, Indigenous, or a Person of Color (BIPOC).

Offered in partnership with Seattle University, the fellowship is an essential component of our effort to add diverse voices to our programming. (Find our full diversity statement online at www.king.org.) Fellows will explore the importance of human-centered storytelling, develop essential classical music research skills, and learn to create and produce longer-form programs. Regular leadership development opportunities round out the fellowship program.

Myah Rose Paden is a classical vocalist and arts advocate from Columbus, Georgia. While she was in graduate school at the University of Michigan, Myah was the co-coordinator for the development of the on-line course Black Performance as Social Protest.

Myah is also an accomplished performer who has sung several chamber and mainstage operatic roles with the U-M Opera and Chamber Choir.

Myah also comes to KING with experience as a social media manager and podcast creator. While at The Kennedy Center, she re-launched a music and social commentary podcast, *Thorn and Thistle*, which she hosts, produces, and edits.

Myah received her Bachelor of Music in Vocal Performance from the University of Georgia. In spring 2022, she graduated from the University of Michigan with a Masters in Vocal Performance. We are thrilled that Myah relocated to Seattle in July 2022 to join Classical KING as our inaugural fellow.



Seattle Arts Fellow Myah Rose Paden (she/they)

Partnerships

Young Artist Awards

The Young Artist Awards (YAA) competition returned for its tenth season beginning April 2022. A joint project with the Seattle Chamber Music Society, YAA celebrates the outstanding young musical talent in our region. Video submissions of classical instrumentalists and vocalists between the ages of 6 and 20 were shown to a panel of world-class judges who chose the finalists. With the help of listener votes, the grand-prize winners in each of the two age categories were chosen, each of whom received a cash prize from BECU and the opportunity to perform on *NW Focus LIVE*.

Classical KING, VuHaus, and NPR Live Sessions

Beginning in the summer of 2021 we embarked on an exciting partnership with VuHaus and NPR Live Sessions. Live Sessions allows you to enjoy live music from the comfort of your own home. Classical KING is proud to be one of the first few classical stations to share performance videos on this platform, curating a new “Seattle Classical” page to give local artists a national stage.

Celebrating 65 Years of St. Mark’s Compline Choir

October 2021 marked a milestone for one of our region’s oldest and most beloved musical traditions. We joined in celebrating the 65th anniversary of the Compline Choir’s Sunday-night

services at Seattle’s St. Mark’s Cathedral. This Seattle choral tradition was founded by Peter Hallock and has been broadcast weekly on Classical KING since the 1960’s. To celebrate the 65th Anniversary, we opened our October 17, 2021 broadcast with a look behind the scenes as compline singer Thomas Adams walked us through the sights, sounds, and spirit of the Compline Service.

Music in Our Schools Month and Music4Life

In March 2022 Classical KING helped celebrate Music in Our Schools Month with a *NW Focus LIVE* broadcast featuring four high school students and their music teachers. They spoke about their experiences in music education – especially amid the exceptional challenges of the past two years – and the students played pieces of the music they have worked on in class.

Understanding that music is a critical part of a balanced education, we teamed up with Music4Life for a special Instrument Drive in July 2021. With a call to action online and on-air we asked musicians and music enthusiasts alike to help inspire the next generation of young music lovers by donating an instrument they no longer use to public schools in our communities.



Unmute the Voices

By Artist-Scholar in Residence Dr. Quinton Morris

I'm Dr. Quinton Morris, and I am honored to be part of the team at Classical KING as the station's first Artist-Scholar in Residence! Before joining Classical KING, I spent my life and career in classical music. As a professional violinist and educator, I'm the violin professor at Seattle University and I run a non-profit violin and viola studio called Key to Change. As a native of Renton, I founded Key to Change to provide world-class music instruction for underserved students, specifically students of color, in South King County. This year, Key to Change is celebrating its fifth year of removing barriers to entry for underserved students of classical music!

As Classical KING's Artist-Scholar in Residence, I am the creator and host of *Unmute The Voices*, a monthly program that highlights and celebrates classical composers and performers of color. Over the past year on *Unmute The Voices*, we've celebrated Juneteenth and Black History Month, spotlighted women of color in classical music, met young people of color who form a vibrant part of the next

generation of classical musicians, and even recorded a show with musicians from the Cincinnati Symphony. *Unmute The Voices* airs on Classical KING on the 3rd Saturday of each month at 3:00pm.

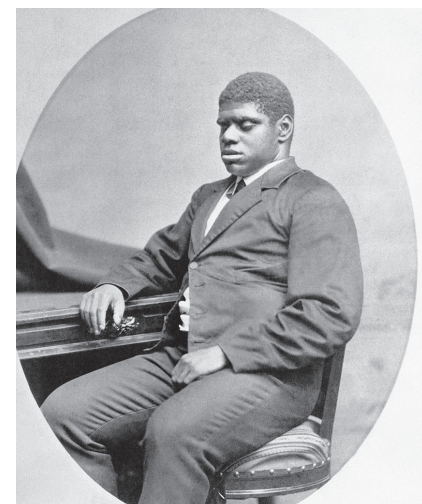
In addition to *Unmute The Voices* radio show, I also host the *Unmute The Voices* video interview series on YouTube, where I chat with other classical artists of color and arts advocates who are passionate about classical music and share their stories of survival and triumph. One of my recent personal highlights was interviewing Classical KING CEO Brenda Barnes. It was great learning more about her vision for Classical KING and getting to know her personally. It's an illuminating interview where we discuss ways organizations can improve equity and Brenda shares her personal journey toward a better understanding of racial justice. It's truly a fantastic interview – please check it out on the *Unmute The Voices* YouTube page.



Programming Diverse Voices

By Music Director Aaron Stoess

We continue our journey of exploring diverse voices in classical music from centuries past to music being created today. In addition to our monthly program *Unmute the Voices*, we strive to make sure every part of our broadcast day includes composers and musicians of color, as well as an increased presence of women composers. This includes relatively well-known names such as Clara Schumann, William Grant Still, Fanny Mendelssohn, Joseph Bologne (Chevalier de Saint-Georges), and Florence Price. But we also have been bringing to the airwaves music by composers that have largely been forgotten, such as Francis Johnson, Thomas Wiggins, Dana Suesse, Elisabeth Jacquet de la Guerre, Isabella Leonarda and Louise Farrenc. We've also put our focus on names with a local connection like William Chapman Nyaho, Gretchen Yanover, Marion Bauer and Barbara Harbach. We hope you'll continue to enjoy exploring these diverse voices with us on Classical KING.



Clockwise from upper left: Clara Schumann, Francis Johnson, Elisabeth Jacquet de la Guerre, Thomas Wiggins, Dana Suesse, and Marion Bauer.



2021 Performance Circle

We are pleased to celebrate those who made a leadership level commitment to Classical KING, either through a gift to our annual fund or special programs, or as a deferred gift through their estate plans from January 1, 2021 through December 31, 2021.

If you notice an error in our donor listing, please contact Barbara Dolby at barbarad@king.org or (206) 691-2961.

Composer Gifts (\$50,000+)

Microsoft Matching Gift Program
Mary Ellen and Gordon Mulder
Lisa and Charles Simonyi
Debbie and Rick Zajicek

Conductor Gifts (\$25,000+)

Anonymous (1)
Diana K. Carey
Juniper Foundation
Lyn and Jerry Grinstein
Susan Harmon and Richard Meyer

Virtuoso Gifts (\$10,000+)

Anonymous (2)
Sylvia and Steve Burges
David Corry
Susan Coughlin and John Lauber
Libor Dener
Jim and Gaylee Duncan
Lynn and Brian Grant Family
Richard Grubb
Ciara and Neil Jordan
Yoshi and Naomi Minegishi
Steve and Lynn Mowe
Joseph Orndorff
Virginia and Christopher Orndorff
The Ariel Fund

Alan Quigley
Nancy Rice
Jon and Patricia Rosen
Eric and Connie Smith

Concertmaster Gifts (\$5,000+)

Anonymous (5)
Chap and Eve Alvord
Karyl and Elias Alvord
Christopher and Cynthia Bayley
Joyce and William Bernheim
The Boeing Company Gift and Volunteer Match Program
Dan Caldwell and Bonnie Brian-Caldwell
Rob and Janet Coe
Kevin P. and Lynne M. Fox
Richard Gelinas and Sara Thompson
Joseph Gianotti
Drs. B. J. Deering and Jay Gillette
Susan and Roger Hanson
Lucy Helm
William Hoppin
Jeanne Kanach
Mary Kippenhan
Henry Y. Li
Scott L. Linn
Carol MacLaren and Richard Kovak
James Kinsella and Robert McNeal
Ronald E. Miller and Murl G. Barker
Phyllis M Potter
Suzanne Ragen
Anne M. Redman
Michael and Susan Redmond
Richard and Rebecca Ripley
G Louis Roberts
Roger and Jane Soder
Muriel Van Housen
Richard Waltonsmith
Charles Webb
Chuck and Darlene Whitney
Robert L. Wiley
Donna and Roger Wolthuis
Heidi Charleson and Louis Woodworth
Max Velichko and Maria Yazykova
Sylvia Zonoff

Principal Chair Gifts (\$2,500+)

Anonymous (6)
Pauline and Byron Anderson
Marion Bakke
Brenda and Bill Barnes
Peter and Jane Barrett
Winston and Brett Berry
Bill and Melinda Gates Foundation
Matching Gift Program
Paula Boggs
Jay and Carol Bowditch
Kathleen Cain
Chieko Chayavichitsilp
Susan and Dennis Christie
Mary and Robert Cleland
Robert and Angela deGavre
Lynn and Martin Dong
Helen Eastwood
James Eastwood
JoLynn Edwards
Dr. Nancy Ellison
Jane and Robin Fraser
Nancy Goodno
Jeffery Graham and John Longres
Ted and Sandy Greenlee
Jeffrey Haley
Dr. M. Elizabeth Halloran
Amy J. Haugerud
Karl Herrmann and Hilde Pfortscheller
David Herter
Susan Hildebrandt
Didem Ikizoglu
Mark Isaacson and Kathi Petrotta
Dean A. Jacobus
Jim and Nancy Kenagy
Alexis Kiselyk
Gary Knapp
Carole Kuo and Warren Cheney
Evelyn and John La Fond
Bernadette and Claude Lee
Chung and Bik-Lam Lee
Tom Lee and Janet Thompson
Holly Lund
Judith Marsden Kroll
Nathan Mircovich
Pamela and Donald Mitchell

Kerry Monterey
Joan Moritz
Martha Noerr and Jeffrey Keane
Miles Otoupal
Steven Phelps
Mary Pigott
Patience Powell
Fenella and Chris Raymond
Lee and Stuart Rolfe Family
Foundation
Elizabeth Rudolf and Fernando Sancho
John F. Saum
Fumiko and Nathan Schaub
Anne-Grace and Norman Scheinin
Belinda Stern and Steven Schickler
Steve Shaub
Linda Shwab
Lynne Singer
Douglas Smith and Stephanie Ellis-Smith
Bert Sullam
Laura Weese
Melet Whinston
Bob and Lindie Wightman
Tom L Wyckoff

Ensemble Gifts (\$1,000+)

Anonymous (30)
Sheena Aebig and Eric Taylor
Dan Alexander
Susan Allen
Anne and Warren Anderson
Martha Anderson
Richard Andler and Carole Rush
Susan and Aaron Aragaki
Seth Arlow, M.D.
Jeanne Baird
Kathy Baird
Alexandra Ballard
Kris Barker
Tom Bayley
Terry Beatty
Ruth and Ronald Beck
Mary Hornsby and Stephen Behnen
Teresa Bell
Rosann Benedict

James Beneteau
Christine Benoit
Michelle Benson
Rebecca Berge
Lisa Bergman and David Fluharty
Nicholas Bez
Alaric Bien
James Birdsall
Kay and Ronald Bland
Eileen Bleeker
Lynn Borgatta
Priscilla Bowerman
Jane Ann Bradbury
Michael Brady
Bonita and David Brewer
Micaela and Kenneth Brostrom
Terry and Dorothy Brown
Leslie and Jeff Brown
Gary Bryan
Donald Bunker
Lorna Butler
Edward and Virginia Buzzell
Richard Bynum
Phil Bytheway
Irene Campbell
Michele and Paul Capeloto
Darla Capetillo
Paul and Betsy Carroll
Julie and Ross Case
Frank and Dee Dee Catalano
Robert Cathey
Linda Chalker-Scott and Jim Scott
Richard Chapman
Gayle and Michael Charlesworth
Alex Cheng
Jan and Phil Cherry
Mary Chesney
Michael Cheung
Elaine Chisholm
Samantha Christine
Celia and Spencer Clevenger
Robert Cole and Jean MacGregor
Kelly and Greg Collins
Joan and Frank Conlon
Loveday Conquest and Fred Kleinschmidt
Harry Cooker
Consuelo and Gary Corbett
Carol Corbin



2021 Performance Circle

Mike Cornforth and Linda Martin
Marissa Coughlin
Patricia Coulter
Garry and Kathryn Crane
Jane and Robert Cremin
Sarah Crosby
Otto Crumroy
Bruce and Miriam Cullen
Susanna Cunningham
Kathy Curry
Anne and John Curtis
Spencer Curtis and Kristen Hoehler
Melissa Dare
Lisa Bauer and Stephen Dart
Aditya Dash
Tanna and David Davenport
Jane and David R. Davis
Steve Davis and Bob Evans
Robert and Nancy de Lambert
Marina de McVittie and Eric
McVittie
Sara and Loren Den Herder
Bo Deng
Brian Dewey and Molly Brown
Cristian Diaconu
Carrie Gail Dira
Richard Dobrow
Erin Dorn
Linda Downes
Teresa Massagli and Fred Drennan
The Drury Family
Jennifer and Geoff Dunbarr
Lois Gamble Duncan
Roy and Libbie Dunn
Sandra Dunn
Sue Elde
Betty Ellsworth
Lynda Emel and Carter Bentley
Joel Erlitz
Dan and Nancy Evans
John Evans
Terry Evans
Miles and Katie Ewing
James Eychaner
Birte and Jim Falconer
Virginia Felton
Susan Fleetwood
Meagan Foley
James Fowler

Diane E. Frank
William Franklin
Paulina Fraser
Zoe Freeman
Ann and Donald Frothingham
Brian Futch
Rod and Barbara Gallagher
Ulrich and Ethel Ganz
Nancy Garrett
Sean Gavin
GE Foundation Matching Gifts
Program
Katharyn Alvord Gerlich
Zanne Gerrard
Michele Geyer
Daisley Gordon
Richard Gould
Allen and Carol Gown
Joe G. and Arnold A.
Suzanne Schreiber and Robert
Greco
Earl Grout
Barbara and Terry Grove
Katherine Groves
Duncan Haas
Lucia Hagander
William and Noel Hagens
William Hahn
Christie Hammond
Julie Hanson
Dianne and Christian Hansson
Lawrence and Hylton Hard
Martin Harriman
C. Scott Harrison
Dr. Robert and Judith Harrison
Paul and Marguerite Harvey
Nelson Hauke
Sarah and Steve Hauschka
Liselotte Haynes
Jennifer and Terrill Hendrickson
John Hendrickson
Martha Lou Henley
Ellen Henneman
Robert Hirsch
Steve Hoberecht
Marie and Charles Hoffman
Bob Holtz
Carrie Horwitch
Nancy Hsi

Jacqueline Hughes
Juretta Hurley
Melinda Jenkins
Michael Jensen and Diane
Kurzontkowski
Julia and A. Neill Johnson
Mark Johnson
Sandra and Clyde Johnson
Nancy H. Jones
Karol and Leyton Jump
Jeannette Kahlenberg
Dave Kaplan
William Keegan
Karen Keith
Dr. Cris Kelley
Mary and George Kenny
Jeanne Kightlinger
Nancy King
Robert King
Virginia King
Dale and Graciela Kingman
Kimberly and William Kipp
Nancy Kiser
Janet Klumas
Eileen and Stephen Knoff
Thomas Kraft
Daniel Lamberth
Joyce Lang
Ron and Carolyn Langford
Margaret and Dale Largent
Eric Larson
David Lawrence and Carla Tachau
Lawrence
Phyllis Lay
G. Layman
Kathleen Leahy
Kathleen Learned
John Leary and Dottie Hall
Colleen Lee
George and Mary Ellen Lemen
Nancy Lemke
Leon and Janet Leonard
Arlene Levy
Jeffrey Lewis and Maureen Tressel
Lewis
Michael Linenberger
Anne and Steven Lipner
The Lofstedt Family
Gretchen Freed and Matt Loschen
Billie Luke

Terry and Ann Lukens
Bryan Lung
Kirby and Marlene Luther
Pamela Lyford
Joy Lyons
Robin and Jeffrey Lyons
Martin Makela
Tina and Hans Mandt
Sara Marks
David Marlow
Elizabeth Martin
Barbara Martyn
Mr. and Mrs. Jason and Toby
Massman
David Mattson
Anne T. McBride
Carol McDonald
Kathleen McGoldrick
Karen and Jeffrey McHenry
Craig McKibben and Sarah Merner
Mary and William McLean
Harriet Mendels
Jason Metzner
Andrew Meyers
Anne Middleton Foster
Carmen Miller
Carolyn Miller*
Kim and Stephan Miller
Mitsuko Miller
Mary Mohr and Vincent Jolivet
James Monteith
Julia Moore
Wynona Morrison
Barbara and Frederick Motteler
Pamela Murphy
John and Nadine Murray
Todd and Mary Nelp
Michael Nelson
Philip Nelson and Mary King
Sheila Noonan and Peter Hartley
Scott Norman
Dennis Noson
Jim and Mariette O'Donnell
Carol Olson
Terry Osborn
Sean Overland
Helen Owens
Nickolina Padgett
Kathleen Palmer
Stephanie and Val Paulson

Lester and Keiko Permut
Jocelyn Phillips and Warren Bakken
Rebecca Phipps
Gale Picker
Moccasin Lake Foundation
Legacy gift of Mitchell Poling
Janice Ann Potter
Kenneth Powers
Stephen Press
Marilyn and Tom Price
Richard and Karen Prince
Gregory and Mary Ellen Psaltis
Bill and Delia Purdy
Cynthia Putnam and Mark Groudine
William Rabel
Douglass and Katherine Raff
Brian Rapalee and Amy Stephson
Ezra Rash
Cara and Dirk Reese
Heidi Renz
Kathryn and Gary Rickert
Marc Robert
Hamish and Peggy Robertson
Lillian H. Robinson, M.D.
James Rodman
John Rogalski
Jack and Sharon Roos
John and Ellie Roser
Diana Rothert
Wendy and Edwin Rubel
Kevin Ruddell and Heather Kroll
Leslie Rugaber
Roby Ryan and Michelle Carle
Jennifer and Ray Rydberg
Karen and John Scales
Marta Schee
Gordon and Dianne Schlicke
Charles and Maria Schweizer
Kaye Scott
Morgan and Anne Seeley
Ashvini Sharma
Craig Sheppard and Gregory
Wallace
Mr. Charles S. Shipley
Margaret and John Shoosmith
Cynthia and David Shurtleff
Beth and Jule Sigall
Robert Sigley*
William Silva*
Ronald Simchen



Jonas Simonis and Jillian Barron
Joyce Simons
Jeannie Simpson
Donald and Mary Simpson
James Sinclair
Joan and Nepier Smith
Barbara Snapp and Phillip
Chapman
George and Cherry Snelling
Janice Sorensen
Rose M. Southall
Karen Sparks
Judith St. Hilaire
Aaron Stachowiak
Philippa Stairs
Lynn Stansbury
Karen Stay
Sylvia Sterne

Dr. W. Theodore and Donna
Steudel
Verner and Marianne Stillner
Henry Stoll
Kent Stowell and Francia Russell
Michael Subit and Leslie Hagin
Yolanda and Stephen Swann
T-Mobile Matching Gifts
Program
David Tan and Sherilyn
Anderson
Atul and Birage Tandon
Elizabeth Taylor
Janice Taylor
Carol and Ken Theimer
Gayle and Jack Thompson
Pamela Thompson
Philip Thorp
Sheri and Jeff Tonn

David and Chris Towne
Raymond Tymas-Jones
Nicholas Utzinger and John
Rochford
Barbara Valentine
Mr. Charles T. Van Decar
Tjitske and Pieter Van der
Meulen
John Van Lierop, Jr.
Claudia and Daryl Vander Pol
Moya Vazquez
Jacqueline and Chad Verbowski
Diane Verge
David and Joyce Veterane
Jean Baur Viereck
Sam and Mary Volpentest
Laura Wagner
Milton Wagy
Judith and William Waldman

Maggie Walker
Ellen and Bill Wanless
Susan Wanwig
Mark Webster
Laurie Weckel
Kathy Wehle and Theresa
Haynie
John and Lynne Weidman
Jonathan Weil and Swee Lian
Tan
Helen and David Weiner
Kristi and Tom Weir
Lee Westerlund
Mary Jo White
Myron and Anita Whitney
Robert and Alice Widmann
Kathryn Williams
Virginia Williams II and Corrie
Anderson, MD
Elisa Williams Warren and
Joseph Warren
Dan and Joann Wilson
Mark Winters
Carolyn and Vincent Wirkman
Katherine and Peter Wolf
Yolande and Nelson Wong
John V. Worthington
Nancy York
Tatiana and Eugene Zabokritski
Eric Zeigler
Kathryn Zufall

*Donor levels are calculated by
adding together annual fund
contributions, in-kind gifts,
vehicle donations, matching
gifts, and pledge payments.*

Legacy Circle

We thank those who have expressed their intent to support the station through their estate plans. For more information on how to make a gift through your will or trust, or to name Classical KING as a beneficiary of your retirement plan or insurance policy, please call Barbara Dolby at (206) 691-2961.

Anonymous (5)
Brenda and Bill Barnes
Scott Bessho
Sharon Bidwell
Jaclyn Brandt
Christine Brass
Carol Christiansen
Christopher Corfman
Johannes and Martha Dankers
Delores DuBois
Jim and Gaylee Duncan
Michael Goins
Pamela Gross
Thomas Grow
Richard Grubb
C. Scott Harrison
Paul and Marguerite Harvey
Jerry and Helene Hedwall
David Kerlick
Carol MacLaren and Richard Kovak
Karin McCullough
Larey and Phyllis McDaniel
Ronald E. Miller and Murl G. Barker
Betty and Tracy Moore
Gregory and Mary Ellen Psaltis
Nancy Rice
G Louis Roberts
Sherwood P. and Judith G. Smith
Patricia Tall-Takacs
Dr. Joan M. Tenenbaum
William R. Trilsch
Muriel Van Housen
Lawrence J. Wichman
Debbie and Rick Zajicek

*Indicates deceased





Mission, Vision & Values

Our Mission

Classical KING will actively grow, diversify, and enrich the love of classical music in our community.

Our Vision

Expand our diverse community of listeners, performers, and supporters who understand and benefit from the powerful impact of classical music and the arts in our region.

Our Values

- Classical music should be accessible to all
- The arts are a critical component of every vibrant city
- K-12 arts education is necessary to develop creativity, innovation, and lifelong appreciation of the arts
- Fiscally-responsible planning is necessary to achieve our vision

Contact

Main Line: (206) 691-2981 | www.king.org.com

Brenda Barnes, *Chief Executive Officer*

Rina Romero, *Chief Operating Officer*

Barbara Dolby, *Chief Development Officer*

Dave Beck, *Chief Content Officer*

Blaine Shepherd, *Director of Underwriting and Sponsorships*