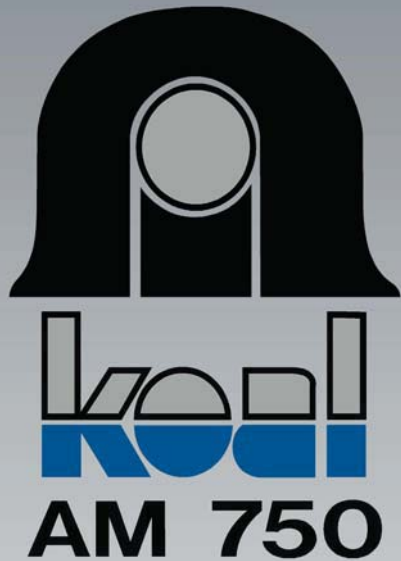


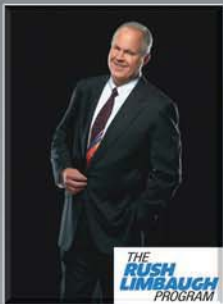
Eastern Utah Broadcasting



Castle Country
Radio.com



Castle Country
DAILY NEWS.com
Local News - Local Sports - Local Information



News, Talk, Sports for the Castle Valley

Format

KOAL is Carbon & Emery Counties original, and most respected station in eastern Utah. KOAL is and has been a full service station for the local community since 1936. The listeners are very loyal and listen often and for longer periods of time. KOAL combines a strong, professional commitment to local news and sports with an engaging line-up of nationally syndicated talk and sports programs. If residents want local sports, KOAL is where they turn to find coverage of all local high school and college teams.

Coverage



KOAL completely covers all of Carbon and Emery Counties as well as portions of Grand, Uinta, Sanpete and Seivre along I-70. KOAL is also on a translator at 103.9 FM



Target Audience

Adults 25-65 with a core emphasis on adults 35-55 primarily male





KOAL News and Information

Castle Valley's most trusted source for news and information provides regular updates throughout the day with hourly Fox news updates at the top of each hour, ABC news updates at the bottom of the hour and local news summaries several times throughout the hour. Breaking news in Carbon and Emery Counties are brought to listeners immediately. If it is happening around the Castle Valley then you'll hear about it first on KOAL.



750 Radio Sports



KOAL is the Castle Valley's sports leader with comprehensive coverage of the Emery Spartans and Carbon Dino's, our local high schools. You will also find football play by play coverage of the University of Utah Utes and Utah State Aggies as well as basketball coverage of both these teams as well as the Eastern Utah Golden Eagles. The element that sets the sports coverage KOAL offers is Drive Time Sports. This local program is hosted by Jordan Buscarini each day from 4-5pm and is full of local sports highlights, interviews and discussion. KOAL also broadcasts NASCAR and is the home for Utah Jazz Basketball.





Format

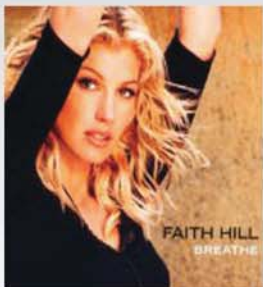
KARB was Castle Valley's first FM station when it went on the air in 1976. The format features a perfect blend of music from all of today's biggest names in country music with a light mix from stars from the past. Like all the other stations under the umbrella of Eastern Utah Broadcasting, KARB has a strong commitment to the coverage of local news and events.

Coverage

KARB Kickin' Country covers all of Carbon and Emery Counties with its crystal clear full power FM signal

Target Audience

Adults 18-55 with a core emphasis on adults 25-45. This format also offers a nice 50/50 split of male and female listenership





Format

KRPX The Peak is all about the music and is the dominant station in the Castle Valley for at work listening. This Active AC format features the perfect blend of today's hits along with hits from the 80's & 90's. It's Top 40 radio without the rap and hard rock. Like all the other stations of Eastern Utah Broadcasting, KRPX has a strong commitment to the coverage of local news and events.

Coverage

KRPX The Peak covers all of Carbon and Emery Counties with its crystal clear full power FM signal. KRPX also covers the recreation mecca of Moab on a translator at 100.3 FM

Target Audience

Adults 18-54 with a core emphasis on adults 25-40 primarily female



Eastern Utah Broadcasting

Broadcast Range

