

INSTALLATION & USER MANUAL

Zone Controller App

Lencore Zone Controller Desktop Application

Welcome to Lencore's Zone Controller Desktop Application! The Zone Controller App allows an administrator to quickly and easily adjust the sound masking, paging or audio volumes for the zone(s) they have the authority to control. This app allows the user to set and adjust the volume to High, Medium or Low.

Important Note: *Prior to launching Zone Controller, the user must first create the Zone(s) using System Manager. The Zones will then be available to assign within Zone Controller.*

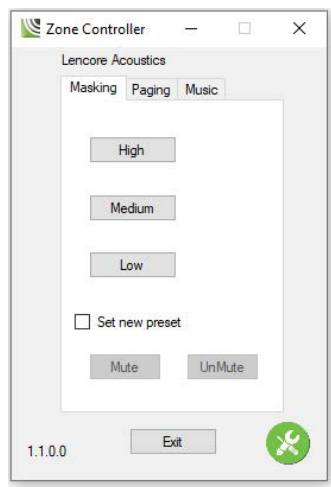
Zone Controller Desktop Application Installation

Using [this link](#), download the .zip file for extraction. Run the "Setup" application file. A desktop icon will appear for quick access to the Zone Controller app.

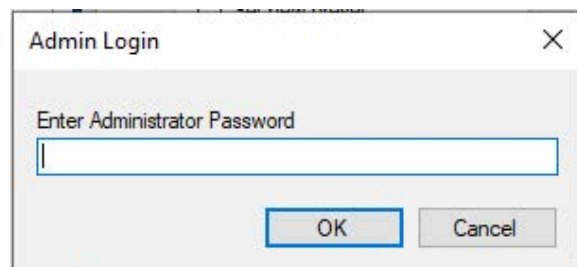
Contact Lencore's Technical Support Team for further help: support@lencore.com or 516-802-7879

Zone Controller Desktop Application Setup

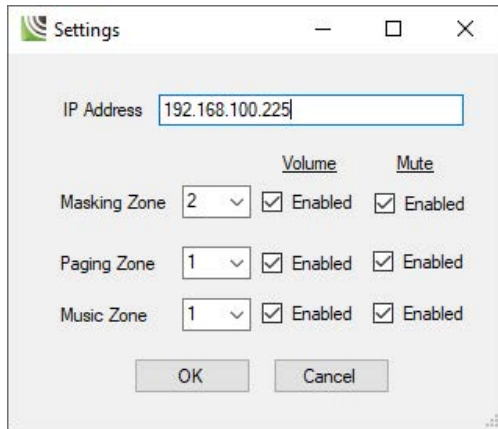
Launch the Zone Controller Application.



In the lower right-hand corner of the application is a green administrator button. Click the administrator button which will then prompt you for a password.



The password for the application is always: comfort
Enter the password and press "ok".



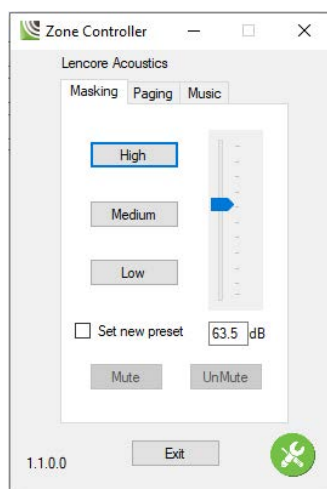
A Settings pop-up window will appear. If the application does not default to the IP address your device sits on within your network, please enter it here.

Next, for Masking, Music and/or Paging, identify which zone number the application will control. Zones can be identified by the Wiring Diagrams provided by Lencore.

Once the zones have been identified and selected, "Enable" the control of the Masking, Music and/or Paging as appropriately permitted (e.g., if you do NOT want the controller to adjust the Paging Volume then do NOT Enable Paging.)

Click "Ok."

Now, in the Zone Controller App, there are independent tabs for: Masking, Music and Paging. If volume control is enabled, lettering will be black; if volume control is NOT enabled for the function then the tab will be "grayed" out.



Click on "High" within any of the enabled tabs. NOTE: Each volume setting is set independently from the other tabs and will need to be completed for each volume set.

Upon clicking "High" a slider bar and decibel (dB) number block will appear. Either slide the slider bar to the desired volume (in dB) or type in the value in the number block.

Check the "Set new preset" box.

Click on "High," again.

Repeat these steps for "Medium" and "Low."

The Zone Controller settings are now set and the application is ready for use.

Using the Zone Controller Desktop App

Simply select the function tab that you want to adjust (Masking, Music or Paging) and click on “High”, “Medium”, or “Low.” The preset volume controls will be applied, and the volume will adjust.

Lencore Acoustics LLC.
516-682-9292
info@lencore.com
www.lencore.com