



Bitter Cold and Gusty Winds

December 13, 2025
3:28 PM

Decision Support Briefing #3 for the western Carolinas and northeast Georgia

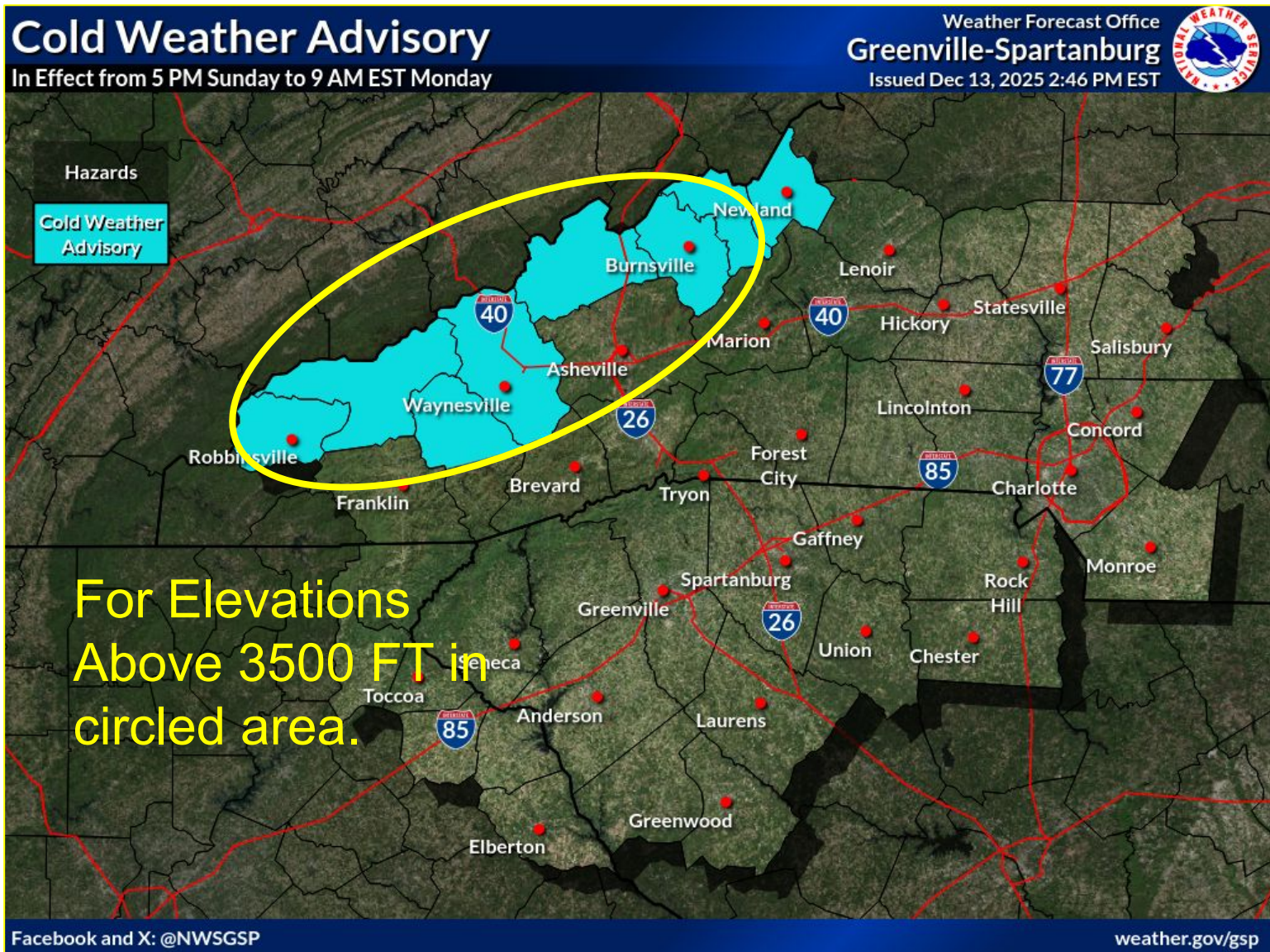
NEW

Important Updates

→ Cold Weather Advisory has been issued for portions of the NC mountains for wind chill values in the -5 to -15 degree range, shown on the map to the right.

Key Messages

- An arctic cold front will cross the area late tonight through Sunday morning, ushering in bitterly cold temperatures and gusty winds to the region through Sunday night.
- Dangerous wind chills expected in the high elevations Sunday through early Monday morning.
- Gusty winds expected across the area with gusts over 40 mph possible above 3500 ft through the day Sunday into Sunday evening.



National Oceanic and
Atmospheric Administration
U.S. Department of Commerce

National Weather Service
Greenville-Spartanburg, SC



Wind Chills Sunday Night

For Sunday afternoon through 7 AM Monday

December 13, 2025
3:28 PM

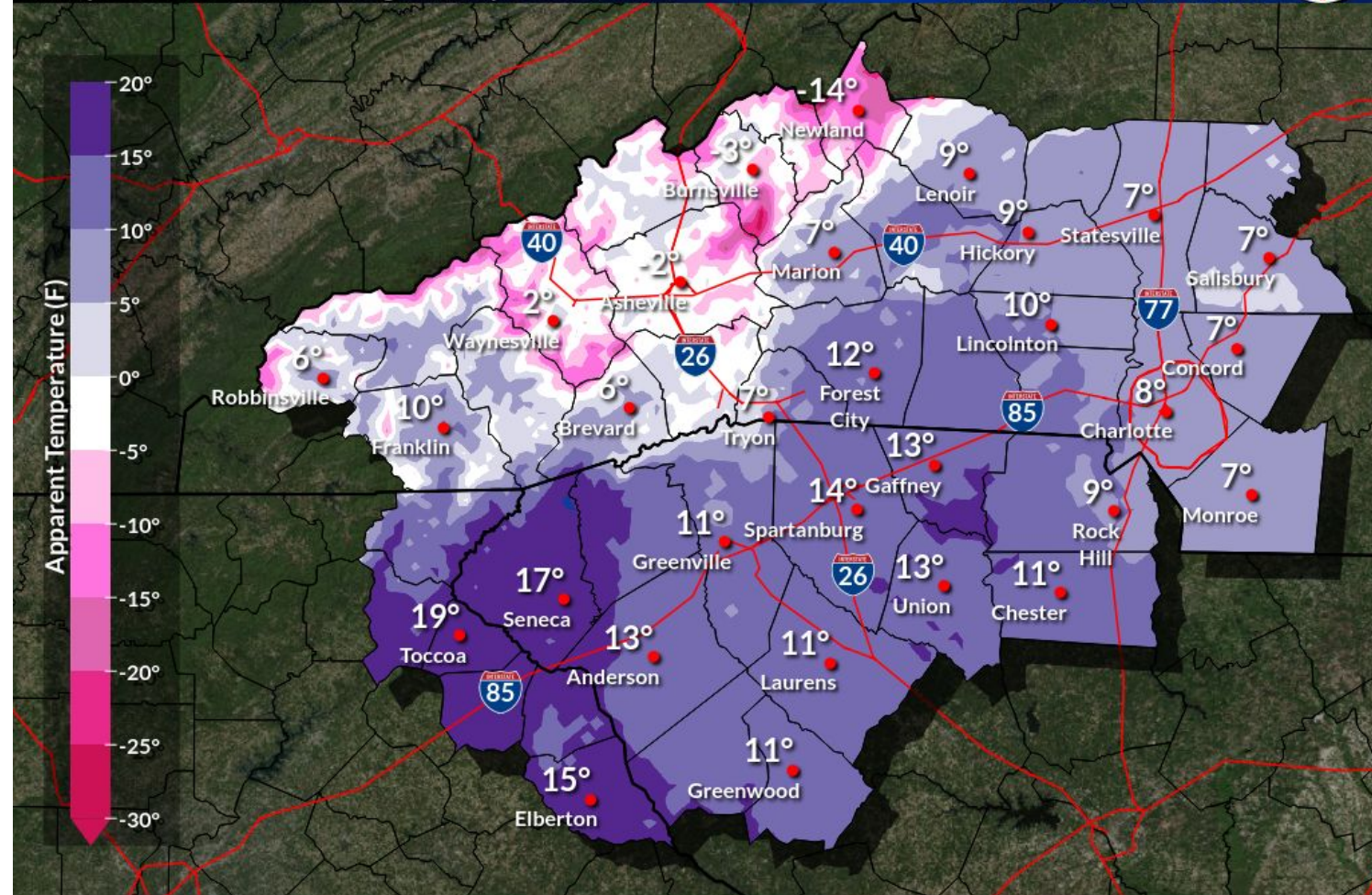
Hazard Details

- Gusty northwest winds combined with falling temperatures will result in wind chills falling into the single digits or lower across the mountains.
- **Cold Weather Advisory in effect for wind chills falling in the -5 to -15 degree range.**
- The lowest wind chills are expected to be overnight Sunday night, but remain low through Monday morning.
- Temperatures will remain cold Monday through Monday night, but winds should gradually weaken. Wind chills will not be as cold Monday night.

Minimum Wind Chill Sun/Sun Night

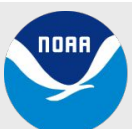
Sunday Dec 14 at 7 AM EST Through Monday Dec 15 at 7 AM

Weather Forecast Office
Greenville-Spartanburg
Issued Dec 13, 2025 1:07 PM EST



Facebook and X: @NWSGSP

weather.gov/gsp



National Oceanic and
Atmospheric Administration
U.S. Department of Commerce

National Weather Service
Greenville-Spartanburg, SC



Gusty Winds Sunday

From early Sunday morning through Sunday evening

December 13, 2025
3:28 PM

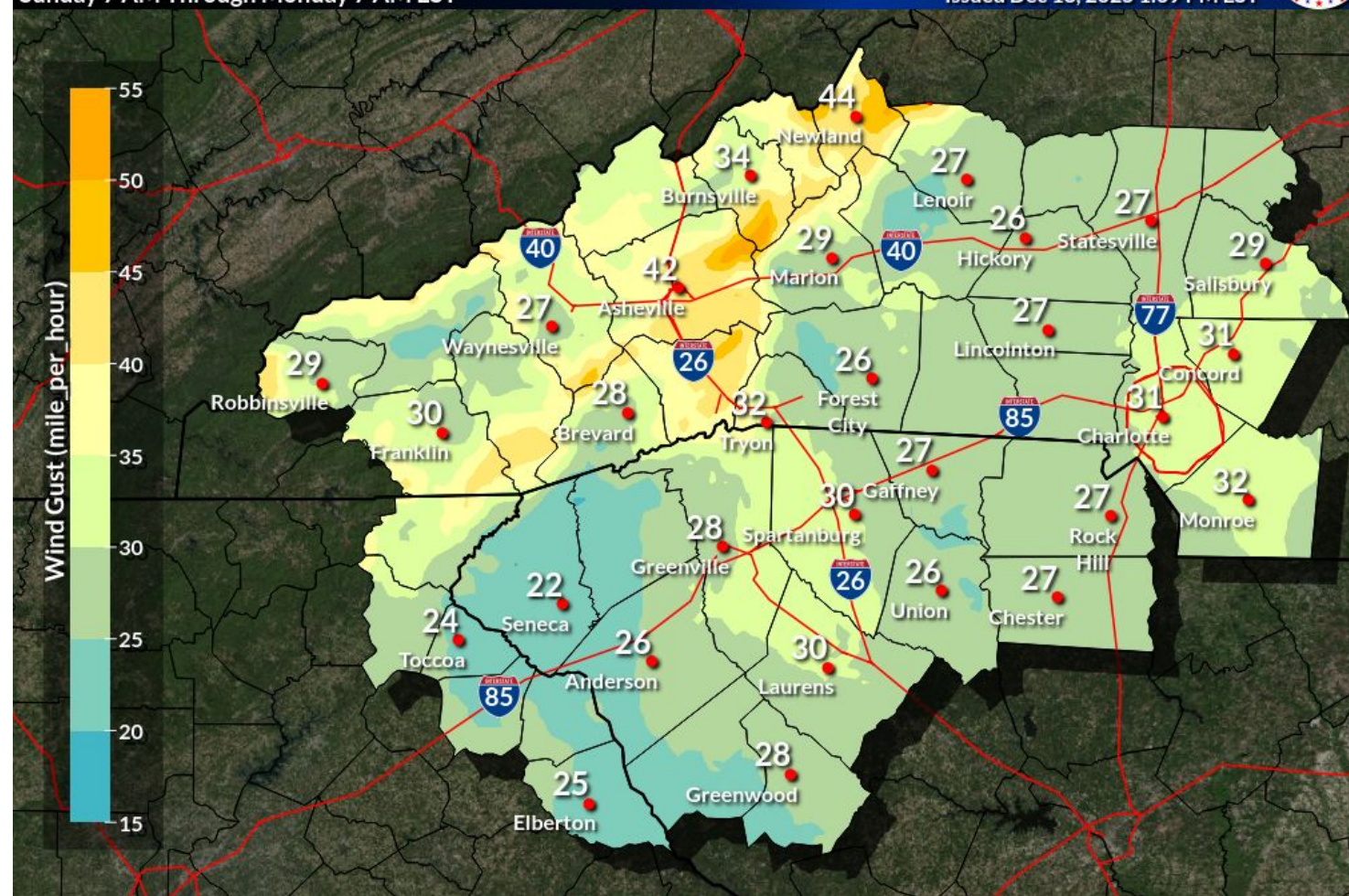
Hazard Details

- Gusts of 25 to 40 mph expected across the mountains starting before sunrise Sunday and lingering through Sunday evening.
- Strongest wind gusts expected to be in the morning across the high peaks, but in the afternoon to early evening elsewhere. Winds will begin to weaken overnight through Monday morning.

Peak Wind Gust

Sunday 7 AM Through Monday 7 AM EST

Weather Forecast Office
Greenville-Spartanburg
Issued Dec 13, 2025 1:09 PM EST



National Oceanic and
Atmospheric Administration
U.S. Department of Commerce

National Weather Service
Greenville-Spartanburg, SC



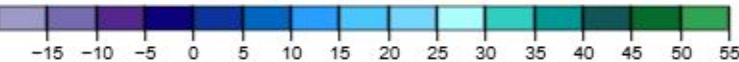
Forecast Timing

December 13, 2025
3:28 PM

For select mountain locations, where the greatest impacts are expected.

Minimum Wind Chill Forecast (°F)

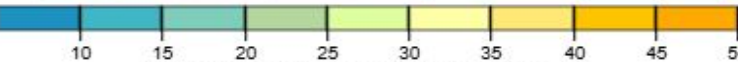
	12/14 Sun								12/15 Mon							
	12am	3am	6am	9am	12pm	3pm	6pm	9pm	12am	3am	6am	9am	12pm	3pm	6pm	9pm
Asheville	35	22	10	9	10	4	-2	-2	0	1	1	11	32	38	30	21
Bakersville	36	22	11	7	8	5	-1	-1	2	7	7	21	39	37	28	27
Banner Elk	26	12	4	-4	-6	-15	-19	-17	-12	-10	-7	8	23	20	13	13
Bryson City	40	27	16	15	16	16	9	10	16	14	14	21	39	45	33	27
Burnsville	35	22	11	8	8	3	-3	-2	2	8	8	18	35	38	29	26
Busick	37	24	16	12	10	3	-2	-2	1	3	5	20	32	34	26	22
Hendersonville	39	27	16	15	15	6	0	0	2	2	3	13	29	32	28	26
Linville	28	14	6	1	0	-11	-16	-15	-11	-8	-6	9	24	25	14	13
Marshall	34	22	11	7	9	6	1	1	4	3	8	16	34	38	30	26
Max Patch	27	14	5	-2	-2	-11	-13	-11	-6	-2	0	11	24	21	15	15
Mt. Mitchell	32	18	11	4	2	-6	-11	-10	-5	-1	2	20	29	27	20	19
Newfound Gap	25	10	1	-3	-4	-15	-17	-15	-7	-2	2	14	27	21	12	12
North Cove	41	29	18	17	16	11	5	6	9	13	12	22	36	38	30	28
Old Fort	40	28	20	19	19	17	8	7	8	12	12	23	37	40	30	27
Robbinsville	39	26	16	14	15	11	6	7	13	12	11	23	41	37	28	26
S. Blowing Rock	36	24	16	10	6	-4	-7	-5	-2	0	2	12	24	26	19	19
Sams Gap	25	14	6	1	0	-8	-12	-11	-7	-4	-1	17	26	24	16	15
Spruce Pine	32	20	8	7	8	2	-6	-5	-3	-2	-1	17	33	35	28	19
Waynesville	39	28	15	15	14	7	2	3	5	11	11	24	41	36	25	23



Minimum Wind Chill Forecast (°F)

Maximum Wind Gust Forecast (mph)

	12/14 Sun								12/15 Mon							
	12am	3am	6am	9am	12pm	3pm	6pm	9pm	12am	3am	6am	9am	12pm	3pm	6pm	9pm
Asheville	21	29	36	38	40	40	40	33	23	16	12	9	7	7	6	9
Bakersville	17	25	32	35	37	36	31	26	17	13	9	7	8	8	8	10
Banner Elk	29	33	43	46	46	45	44	40	30	24	21	16	13	14	17	22
Bryson City	13	15	16	18	22	21	22	17	10	7	5	5	8	8	8	7
Burnsville	16	22	29	32	35	33	31	25	16	13	9	7	8	8	8	10
Busick	21	28	37	38	39	39	39	36	26	21	16	10	9	9	9	13
Hendersonville	18	30	39	40	37	39	37	33	25	20	15	10	10	12	8	7
Linville	29	37	44	46	45	46	47	43	32	26	22	16	13	14	16	21
Marshall	18	24	29	31	33	35	35	26	16	10	7	6	7	7	7	8
Max Patch	23	28	32	35	36	35	35	26	16	12	10	9	9	9	12	13
Mt. Mitchell	22	28	35	38	39	38	37	33	23	17	14	9	9	9	10	14
Newfound Gap	26	31	35	38	39	38	39	37	24	16	14	13	14	15	15	16
North Cove	17	28	37	37	35	35	35	25	17	13	10	8	8	8	7	9
Old Fort	10	14	17	18	18	23	23	17	10	7	5	5	8	8	6	5
Robbinsville	14	17	23	26	29	29	25	18	9	6	3	5	8	9	7	6
S. Blowing Rock	23	30	38	39	38	41	40	35	25	20	16	12	12	12	12	14
Sams Gap	21	24	30	33	36	36	36	30	20	14	10	9	10	10	10	13
Spruce Pine	22	32	39	39	39	39	37	32	23	17	14	9	9	9	9	13
Waynesville	12	13	20	25	28	26	23	18	12	7	3	6	9	9	8	8



Maximum Wind Gust Forecast (mph)

Created: 2 pm EST Sat 12/13/2025 | Values are minimums over the period beginning at the time shown.

Created: 2 pm EST Sat 12/13/2025 | Values are maximums over the period beginning at the time shown.





Contact and Next Briefing Information

For the western Carolinas and northeast Georgia



Briefing Webpage

→ weather.gov/media/gsp/YouTube/brief.pdf



Next Briefing

→ By 6 AM EST Sunday, December 14, 2025
→ Method: PDF



Disclaimer

→ Information contained in this briefing is time-sensitive
→ **Do Not Use After: 5 AM EST Sunday, December 14, 2025**



Contact Information

Web

→ weather.gov/gsp

Phone

→ 864-848-3859

Email

→ nws.er.gsp.met@noaa.gov

Facebook

→ <https://facebook.com/NWSGSP/>

X

→ <https://x.com/NWSGSP>

