

# BENTON HARBOR -FAIR PLAIN

## TRANSMISSION LINE REBUILD PROJECT

**INDIANA  
MICHIGAN  
POWER**

An **AEP** Company  
BOUNDLESS ENERGY™

Indiana Michigan Power officials plan power grid upgrades to improve electric reliability for customers in southwest Michigan. The Benton Harbor-Fair Plain Transmission Line Rebuild Project involves updating about 7 miles of electric transmission line to 69-kilovolt (kV) standards.

### WHAT

The project involves:

- Updating approximately 7 miles of 34.5-kV transmission line to 69-kV standards
- Replacing aging wooden poles with modern steel poles

### WHY

The project:

- Strengthens the local electric transmission system by updating aging poles and wires from the 1950s
- Updates the local electric transmission system to support a higher voltage (69 kV)
- Reduces the likelihood of power outages
- Speeds recovery of service when outages occur

### WHERE

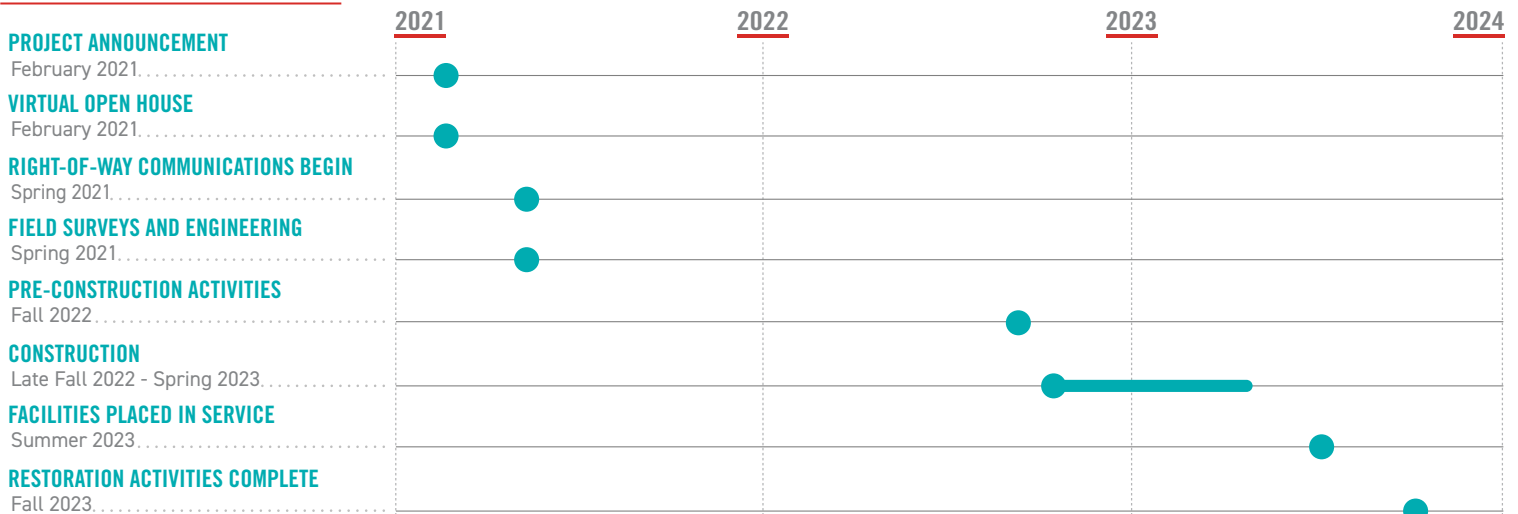
The project area includes:

- City of Benton Harbor
- Community of Fair Plain
- Berrien County

Company representatives plan to rebuild some sections of the power line in the existing right-of-way, which could require updating or supplementing current easements. Other sections of the project may include re-routes that would require new easements.

Easements are defined land rights that property owners grant the utility to allow for the safe construction, operation, and maintenance of the power line

### PROJECT SCHEDULE



\*Timeline subject to change.

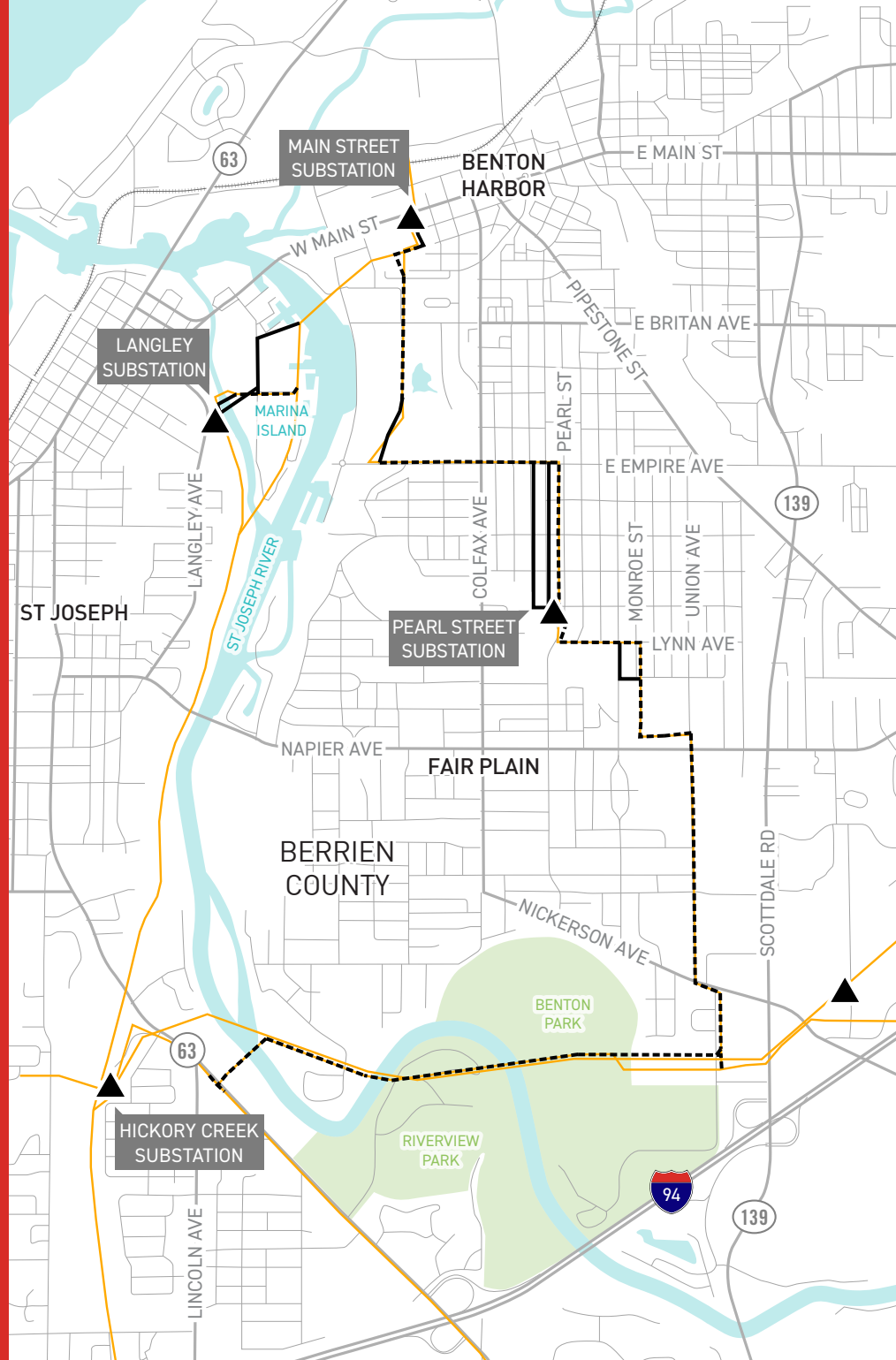
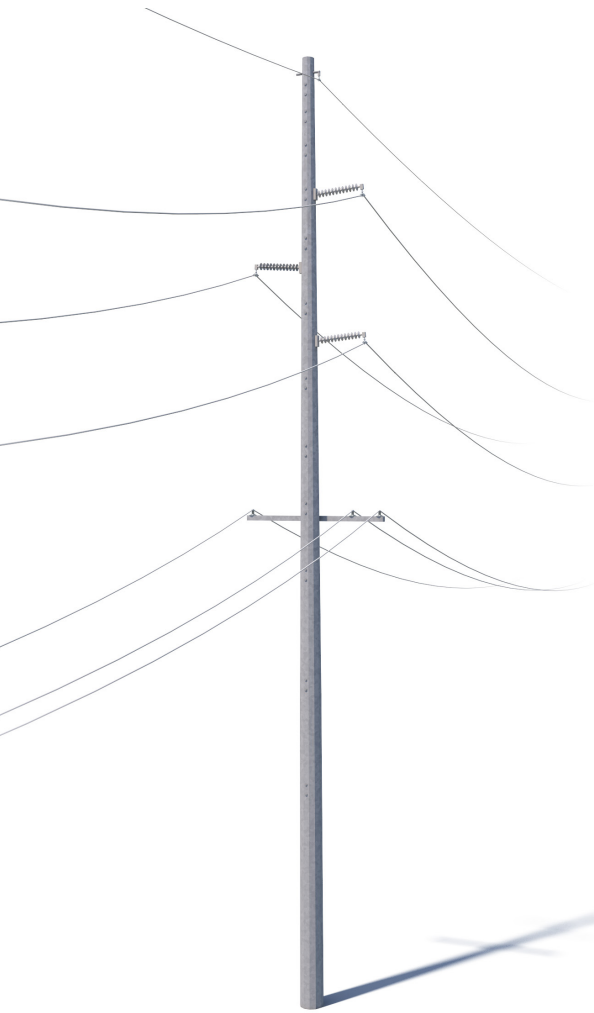
## TYPICAL STRUCTURES

The project involves installing steel poles.

Structure Height: **Approximately 75 feet\***

Right-of-Way Width: **Approximately 60 feet\***

\*Exact structure, height and right-of-way requirements may vary



### BENTON HARBOR-FAIR PLAIN TRANSMISSION LINE REBUILD PROJECT

— EXISTING TRANSMISSION LINE

- - - EXISTING TRANSMISSION LINE TO BE REBUILT

▲ EXISTING SUBSTATION

— STUDY SEGMENT\*

\* Study segments are multiple alternatives presented to determine a line route. The company does not build all study segments; rather, it selects one route to build based on public input and feasibility.

I&M VALUES YOUR INPUT ABOUT THIS PROJECT. PLEASE SEND COMMENTS AND QUESTIONS TO:

✉ Indiana Michigan Power  
c/o Scott Yarbrough  
P.O. Box 60  
Fort Wayne, IN 46801

✉ sayarbrough@aep.com  
☎ (260) 466-7929  
➡ IndianaMichiganPower.com/BentonHarbor

**INDIANA  
MICHIGAN  
POWER**  
An AEP Company  
BOUNDLESS ENERGY™